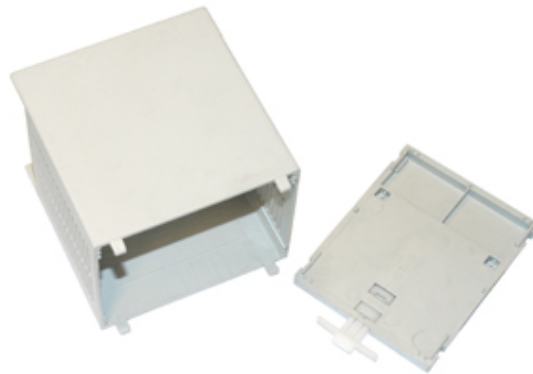


# DIN Rail Enclosures

## Range: DIN Rail Enclosures and Accessories

Order Code: DNCB/4V



### DESCRIPTION

100mm DIN Rail mounting PCB enclosure open top, enclosure 4.  
100mm DIN Rail Mounting PCB Enclosures are available with solid or open tops and come with snap-on bases and terminal covers. They are ideal for use in the electromechanical and electronic markets and can be customised to suit individual needs.

### DIN RAIL ENCLOSURES AND ACCESSORIES FEATURES

- 4 Sizes Available: W90 x L36,53.5,71 x H100mm
- Materials: Flame retardant UL94-V0 Polycarbonate
- Colours: Grey (G) / RAL 7035
- Cover colours: Grey (G), red transparent (R) or clear (C)
- DIN Rail 35mm mounting
- Snap-on kits for easy assembly
- Snap-on base
- Suitable for PCB thickness up to 1.6 mm
- Holds up to 3 PCB's horizontally and 2-4 vertically
- Option for incorporating a screw mounted heat sink
- Snap-on terminal covers slotted for most pitches
- Snap-on terminal covers with knockout holes for pitch 5/10
- All enclosures can be customised

*Subject to technical modification without notice.*

*Typographical and other errors do not justify claim for damages.*

## SPECIFICATION

<b>Body Material</b>	Flame retardant UL94-V0 polycarbonate
<b>Body Style</b>	Vented
<b>Comments</b>	All enclosures can be customised
<b>Height (mm)</b>	100
<b>Length (mm)</b>	71
<b>Top Style</b>	Open
<b>Width (mm)</b>	90