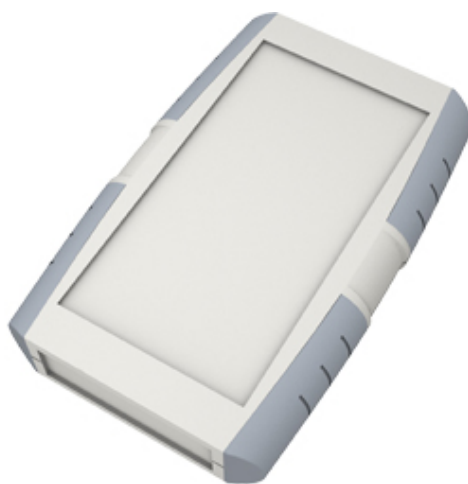


Hand Held Cases

Range: Enclosures

Order Code: 33133316



DESCRIPTION

Series 33 - Ergonomically designed hand held ABS enclosure that is snap-fit and screw assembly. The main enclosure is manufactured from robust 3mm thick ABS whilst the separately ordered colour coded corners are manufactured in Polypropylene coated with a TPE non-slip material for more positive handling. An optional EPDM gasket to improve sealing to IP65 is also available and specific models in the range also have an integrated battery compartment which has a screw fixing cover. These products are particularly suitable for housing electronics for remote control or instrumentation applications that require a tough and resilient product.

ENCLOSURES FEATURES

- Ergonomically designed for more comfortable use
- Manufactured in tough 3mm thick ABS material
- Separate battery compartment with separate cover on specific models in the range
- Snap fit and screw assembly
- Gasket option to increase IP rating to IP65
- Colour coded non-slip corners available separately
- Temperature resistant to 85°C

Subject to technical modification without notice.

Typographical and other errors do not justify claim for damages.

SPECIFICATION

| | |
|----------------------------------|---|
| Product Type | Hand Held Cases |
| Base Colour | Light Grey RAL7035 |
| Lid Colour | Light Grey RAL7035 |
| Enclosure Material | ABS |
| Colour | Light Grey |
| Min Temperature Rating °C | 0 |
| Max Temperature Rating °C | 85 |
| Height (mm) | 200 |
| Width (mm) | 120 |
| Depth (mm) | 35 |
| Comments | IP Rating can be increased to IP65 by fitting the EPDM gasket seal part number 33070045, IP60 rating for standard enclosure. Dimensions shown include fitted corners. |
| Accessories Available | 33070045, 33133225, 33133325, 33133425, 33133525, 33133625, 33133725, 33133825, 33133235, 33133335, |