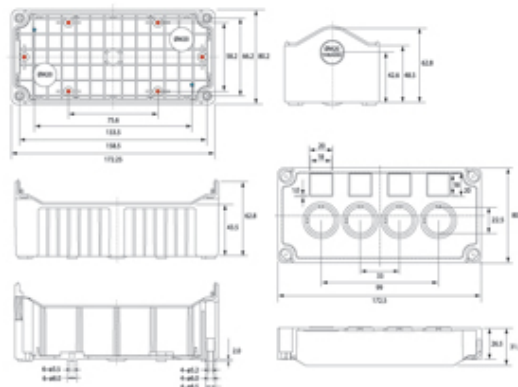
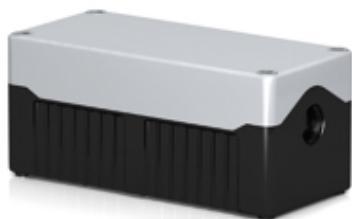


Rectangular Enclosures/Junction Boxes

Range: Enclosures

Order Code: EJB-CBA-18-08-08-GB (DE04D-A-GB-0)



DESCRIPTION

Size 4, deep base ABS material grey lid black base with 0 holes

ENCLOSURES FEATURES

- 4 sizes available - standard & deep base
- Sealed to IP67
- Complete with M20 cable knockouts
- Captive plastic screws in lid
- Available in standard and deep base
- Suitable for enclosing printed circuit boards - vertically (via mounting slots) or horizontally
- Unique snap-on DIM rail and flange brackets available
- Also available in ABS-UL94
- Temperature rating of -10° to +65°

Subject to technical modification without notice.

Typographical and other errors do not justify claim for damages.

SPECIFICATION

Product Type	Deep base
Number of Holes	0
Base Style	Deep base
Base Colour	Black
Lid Colour	Grey
Enclosure Material	ABS-UL94-HB
IP Rating	67
Min Temperature Rating °C	-10
Max Temperature Rating °C	65
Height (mm)	80
Width (mm)	172
Depth (mm)	78
Accessories Available	Snap-on flange & DIN Rail brackets