

IP Rated Electrical Enclosures Range and Accessory Products

Including Plastic and Steel Enclosures,
Junction Boxes, Control Equipment & Connectors



IP65

IP66

IP67

IP68

MAKING THE **RIGHT** CONNECTIONS



Designed for Today's Professional Electricians

Hylec-APL manufactures a wide range of Electrical Enclosures and Control Equipment, designed to meet the highest standards.

Manufactured in a variety of ABS-HB flame retardant plastic, galvanised steel, stainless steel and aluminium, the range is rated to IP65, IP66, IP67, IP68, IK08 and IK10 and the steel range comes with a 3-year corrosion warranty.

Each door enclosure is supplied complete with galvanised mounting plates and screws and also comes equipped with lock and key. The ABS plastic enclosures have an option for transparent doors and the metal door enclosures have pre-wired earth straps.

Finally, there is a wide variety of sizes across the range, certain to cover your requirements.

In addition to the enclosures, Hylec also supplies several ranges of associated equipment that is fully compatible and manufactured to the same high standards. These include isolators, control stations, switching equipment, lamps, filter fans, temperature control equipment, connectors and cable glands.

| Range | Description | Closure Type | No. of Sizes | Complete Kit Inc.* | Lockable, Key Supplied | Transparent Door/Lid Option | IP/IK Rating | Prewired, Fitted Earth Strap | Internal Mountings Included | Temp Range |
|-----------------|--|--------------|--------------|--------------------|------------------------|-----------------------------|--------------|------------------------------|-----------------------------|-----------------|
| DE0 Series | Flame Retardant ABS/Polycarbonate Enclosures | Screw | 8 | ✓ | | ✓ | IP67/IK08 | | ✓ | -10°C to +65°C |
| DN Series | Flame Retardant ABS Enclosures | Screw | 7 | ✓ | | ✓ | IP66/IK08 | | ✓ | -10°C to +80°C |
| DED Series | Flame Retardant ABS Door Enclosures | Door | 10 | ✓ | ✓ | ✓ | IP65/IK08 | | ✓ | -20°C to +85°C |
| DEDS Series | Galvanised Steel Door Enclosures | Door | 21 | ✓ | ✓ | | IP66/IK10 | ✓ | ✓ | -20°C to +55°C |
| DEDSS Series | Stainless Steel Door Enclosures | Door | 6 | ✓ | ✓ | | IP66/IK10 | ✓ | ✓ | -20°C to +55°C |
| Die Cast Series | Aluminium Harsh Environment Enclosures | Screw | 10 | ✓ | | | IP68/IK10 | | | -60°C to +200°C |

*Hylec enclosures are supplied complete and ready for use. See specific pages for details.

For further information contact our helpful staff (see below).

IP67

DE0 Enclosures

| | |
|---------------------|--------------------------|
| IP/IK RATING | IP67/IK08 |
| COLOUR | GREY/BLACK/TRANSP |
| TEMP. RATING | -10°C TO +65°C |
| MATERIAL | ABS/POLYCARBONATE |



OVERVIEW

Available in either ABS plastic (UL94-HB) or polycarbonate (UL94-V0) and in standard or deep bases, the DE0 range is rated to IP67.

The range is available with a unique snap-on DIN rail and flange brackets and is suitable for enclosing printed circuit boards vertically (via mounting slots) or horizontally.

The enclosures come in for different sizes with an option for standard or deep bases. The captive plastic screws ensure they will not be dropped/lost during fixing.

The DE0 range is also available with pre-drilled holes for control switches, see the accessories page.



FEATURES

IP67 & IK08 RATED

FLAME RETARDANT ABS TO UL94-HB

ALSO AVAILABLE IN POLYCARBONATE UL94-V0

CAPTIVE SCREWS IN LID

AVAILABLE IN A COMBINATION OF GREY, BLACK AND TRANSPARENT COLOURS

UNIQUE SNAP-ON DIN RAIL AND FLANGE BRACKETS AVAILABLE

COMPLETE WITH M20 CABLE KNOCK-OUTS

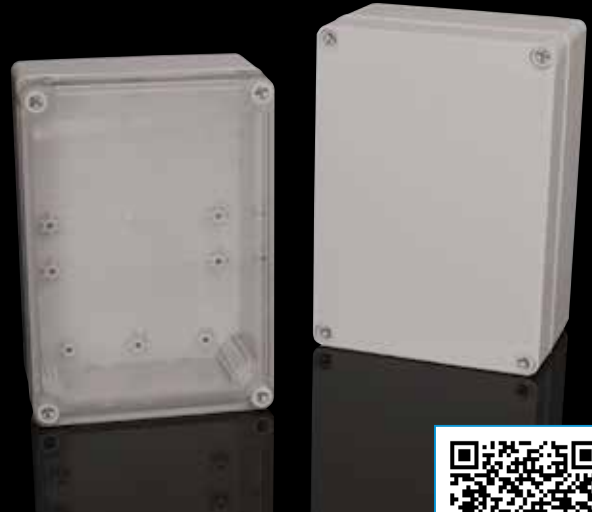
Range Sizes

| W (mm) | D (mm) | Standard Base | Deep Base |
|--------|--------|---------------|-----------|
| | | H (mm) | H (mm) |
| 80 | 73 | 53 | 78 |
| 80 | 106 | 53 | 78 |
| 80 | 139 | 53 | 78 |
| 80 | 172 | 53 | 78 |

IP66

DN Junction Boxes/Enclosures

| | |
|---------------------|-----------------------|
| IP/IK RATING | IP66 / IK08 |
| COLOUR | GREY (RAL7035) |
| TEMP. RATING | -10°C TO +80°C |
| MATERIAL | ABS PLASTIC |



OVERVIEW

Manufactured from flame retardant ABS to UL94-HB, our range of DN Junction Boxes is manufactured to a very high quality which can endure high impact.

A solid wall thickness of between 3 & 4mm makes these enclosures incredibly tough and durable. Each one is moulded with internal mounting stand-offs and vertical PCB mounting slots. The DN Junction Box is ideal for use as a cable junction box or to enclose PCBs, control & emech components.

Available in 7 sizes, with optional Galvanised Steel, Component Mounting Plate

KIT INCLUDES:

- Pre-cut length of 35mm DIN rail section
- Fixing screws for supplied DIN rail



FEATURES

IP66 & IK08 RATED

FLAME RETARDANT ABS TO UL94-HB

MULTIPLE SLOTS FOR VERTICAL PCB MOUNTING

CAPTIVE SCREWS IN LID

COVER AVAILABLE IN GREY (RAL 7035) OR TRANSPARENT

SUPPLIED WITH A 35MM DIN RAIL SECTION & MOUNTING SCREWS

SOLID DOORS

| Product Code | W (mm) | H (mm) | D (mm) |
|--------------|--------|--------|--------|
| DN12E | 125 | 125 | 75 |
| DN13E | 125 | 125 | 100 |
| DN14E | 125 | 175 | 75 |
| DN15E | 125 | 175 | 100 |
| DN16E | 125 | 175 | 125 |
| DN17E | 125 | 175 | 150 |
| DN18E | 175 | 175 | 125 |

TRANSPARENT DOORS

| Product Code | W (mm) | H (mm) | D (mm) |
|--------------|--------|--------|--------|
| DN12T | 125 | 125 | 75 |
| DN13T | 125 | 125 | 100 |
| DN14T | 125 | 175 | 75 |
| DN15T | 125 | 175 | 100 |
| DN16T | 125 | 175 | 125 |
| DN17T | 125 | 175 | 150 |
| DN18T | 175 | 175 | 125 |

IP65

DED Door Enclosures

| | |
|---------------------|-----------------------|
| IP/IK RATING | IP65 / IK08 |
| COLOUR | GREY (RAL7035) |
| TEMP. RATING | -20°C TO +85°C |
| MATERIAL | ABS PLASTIC |



OVERVIEW

Manufactured from flame retardant ABS to UL94-HB, our DED range of Door Enclosures is manufactured to a very high quality which can endure high impact. Ideal for use in harsh locations such as salt air conditions and dry dust environments, DED enclosures come complete with everything you need in one kit. Available in 10 sizes.

KIT INCLUDES:

- Galvanised mounting plate plus fixing screws
- 1 x Key Included as Standard

TRANSPARENT DOORS

| Product Code | W (mm) | H (mm) | D (mm) |
|--------------|--------|--------|--------|
| DED011 | 300 | 200 | 130 |
| DED012 | 350 | 250 | 150 |
| DED014 | 400 | 300 | 170 |
| DED015 | 400 | 300 | 220 |
| DED016 | 500 | 350 | 190 |
| DED017 | 500 | 400 | 240 |
| DED018 | 600 | 400 | 220 |
| DED020 | 700 | 500 | 250 |
| DED3013 | 500 | 400 | 175 |
| DED3022 | 800 | 600 | 260 |

FEATURES

IP65 & IK08 RATED

FLAME RETARDANT ABS TO UL94-HB

BODY SUPPLIED IN GREY (RAL7035)

DOOR SUPPLIED IN GREY (RAL7035) OR TRANSPARENT OPTION

TEMPERATURE RANGE OF -20°C TO +85°C

AVAILABLE IN 10 SIZES

SOLID DOORS

| Product Code | W (mm) | H (mm) | D (mm) |
|--------------|--------|--------|--------|
| DED001 | 300 | 200 | 130 |
| DED002 | 350 | 250 | 150 |
| DED004 | 400 | 300 | 170 |
| DED005 | 400 | 300 | 220 |
| DED006 | 500 | 350 | 190 |
| DED007 | 500 | 400 | 240 |
| DED008 | 600 | 400 | 220 |
| DED010 | 700 | 500 | 250 |
| DED3003 | 500 | 400 | 175 |
| DED3021 | 800 | 600 | 260 |



IP66

DEDS Steel Door Enclosures

| | |
|---------------------|-------------------------|
| IP/IK RATING | IP66 / IK10 |
| COLOUR | GREY (RAL7035) |
| TEMP. RATING | -20°C TO +55°C |
| MATERIAL | GALVANISED STEEL |



OVERVIEW

Every Hylec DEDS Door Enclosure comes complete with everything you need in one kit. Manufactured from galvanised steel, each door enclosure & 2mm back plate comes with a 3 year guarantee against corrosion. Available in 21 sizes.

KIT INCLUDES:

- Galvanised Steel Wall Mounting Brackets
- Galvanised Mounting Plate
- Spacers for the Back Plate
- Pre-wired and Fitted Earthing Strap
- Stainless Steel Studs
- Metal Locks and Key supplied as Standard



FEATURES

IP66 & IK10 RATED

PRE-WIRED & FITTED EARTH STRAP

GLAND PLATE WITH IP66 SEALING GASKET

COMPLIANCE TO IEC 60529 & CE CERTIFIED

PERFORATED STEEL BACK PLATE AVAILABLE

3 YEAR GUARANTEE AGAINST CORROSION

| Product Code | W (mm) | H (mm) | D (mm) |
|--------------|--------|--------|--------|
| DEDS0099 | 250 | 200 | 130 |
| DEDS0100 | 300 | 200 | 130 |
| DEDS0102 | 300 | 350 | 130 |
| DEDS0200 | 350 | 250 | 150 |
| DEDS0300 | 500 | 400 | 175 |
| DEDS0400 | 400 | 300 | 170 |
| DEDS0500 | 400 | 300 | 220 |
| DEDS0502 | 400 | 400 | 200 |
| DEDS0600 | 500 | 350 | 190 |
| DEDS0601 | 500 | 400 | 200 |
| DEDS0611 | 500 | 400 | 175 |
| DEDS0700 | 500 | 400 | 240 |
| DEDS0702 | 500 | 500 | 200 |
| DEDS0800 | 600 | 400 | 200 |
| DEDS0802 | 600 | 400 | 250 |
| DEDS0803 | 600 | 600 | 250 |
| DEDS0900 | 800 | 400 | 200 |
| DEDS1000 | 700 | 500 | 250 |
| DEDS1001 | 800 | 600 | 260 |
| DEDS1012 | 1000 | 600 | 300 |
| DEDS1013 | 1000 | 600 | 300 |

IP66

DEDSS Stainless Steel Door Enclosures



| | |
|---------------------|------------------------|
| IP/IK RATING | IP66 / IK10 |
| FINISH | POLISHED STEEL |
| TEMP. RATING | -20°C TO +55°C |
| MATERIAL | STAINLESS STEEL |

OVERVIEW

Manufactured from grade 304 Stainless Steel, each enclosure comes complete with everything you need in one kit - so there is no need to purchase everything individually (saving you valuable time). Available in 6 sizes.

KIT INCLUDES:

- Galvanised Steel Wall Mounting Brackets
- Galvanised Mounting Plate
- Spacers for the Back Plate
- Pre-wired and Fitted Earthing Strap
- Stainless Steel Studs
- Metal Locks and Key supplied as Standard



FEATURES

IP66 & IK10 RATED

PRE-WIRED & FITTED EARTH STRAP

STAINLESS STEEL HOUSING (GRADE 304) *

2MM GALVANISED STEEL BACK PLATE

METAL LOCK & KEY

AVAILABLE IN 6 SIZES

* Marine Grade 316 also available on request

| Product Code | W (mm) | H (mm) | D (mm) |
|--------------|--------|--------|--------|
| DEDSS3101 | 300 | 200 | 150 |
| DEDSS3102 | 300 | 200 | 150 |
| DEDSS3402 | 400 | 300 | 200 |
| DEDSS3502 | 400 | 400 | 200 |
| DEDSS3601 | 500 | 400 | 200 |
| DEDSS3702 | 500 | 500 | 200 |

Rotary Isolators

Made with high quality components, this range of isolators represents extremely good value

IP68



AVAILABLE SIZES AC & DC

| AC Part No. | Amps | H (mm) | W (mm) | D (mm) |
|---------------|------|--------|--------|--------|
| DE1S.04.20AC | 20A | 145 | 80 | 98 |
| DE1S.04.25AC | 25A | 145 | 80 | 98 |
| DE1S.04.32AC | 32A | 145 | 80 | 98 |
| DE1S.04.40AC | 40A | 145 | 80 | 98 |
| DE1S.04.63AC | 63A | 180 | 81 | 98 |
| DE1S.04.80AC | 80A | 180 | 81 | 98 |
| DE1S.04.100AC | 100A | 180 | 81 | 98 |

| DC Part No. | Amps | H (mm) | W (mm) | D (mm) |
|-------------|------|--------|--------|--------|
| DE1S.16DC | 16A | 180 | 81 | 98 |
| DE1S.25DC | 25A | 180 | 81 | 98 |
| DE1S.32DC | 32A | 180 | 81 | 98 |

Kwik-fix cable glands

A range of unique cable glands that can be secured from the exterior side of the connector box

IP66

CABLE SIZES:
M25 11-17MM
M20 8-12MM
M16 5-10MM



FEATURES

ASSEMBLY FROM ONE SIDE

NO INTERNAL LOCK NUT NEEDED

REDUCED ASSEMBLY TIME

NO SPECIAL TOOLS NEEDED

IDEAL WHEN SPACE IS LIMITED

Weatherproof connectors

IP68

Rated up to IP68/IP69K The Weatherproof range of electrical connectors represents the cutting edge of technology. Designed to be fully reliable in the most adverse of conditions, Weatherproof connectors are simple and quick to use.

IP69K



Control Stations

A comprehensive and versatile range of control stations

IP66



FEATURES

INSULATION RESISTANCE - >100MOHM @ 500VDC

ENCLOSURES SEALED UP TO IP66

AVAILABLE WITH UNIQUE SNAP ON DIN RAIL, MOUNTING FEET AND FLANGE BRACKETS

2 CONTACT BLOCKS FITTED AS STANDARD (1XN/O 1XN/C)

OPERATING TEMPERATURE -10°C TO +65°C

Venting Elements

IP69K

Hylec venting elements are quick and easy to install and control the humidity and condensation levels within enclosures.

Available in black or grey, sizes M12, M20 and M40.



FEATURES

TEMPERATURE RATING -40°C TO 100°C

BREATHABLE YET WATERTIGHT PES MEMBRANE

IP RATED UP TO IP69K