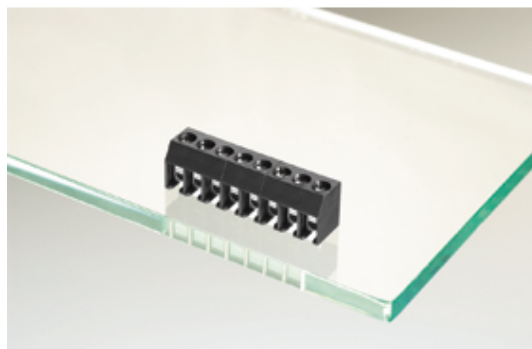




Standard PCB Terminal Blocks

Range: PCB Terminal Blocks, Connectors and Fuse Holders

Order Code: 31059106



DESCRIPTION

6 Pole horizontal screw PCB terminal block 3.5mm pitch 13.5A 125V

Subject to technical modification without notice.

Typographical and other errors do not justify claim for damages.

SPECIFICATION

Type	Screw
Mounting Type	Wave - through hole
Orientation	Horizontal
Join	Solid body non stackable
Pitch (mm)	3.5
Number of Poles	6
Min Wire Size (Sq mm)	0.08
Max Wire Size (Sq mm)	1
Max Current (A)	13.5
Max Voltage (V)	125
Standard Colour	Black
Length (mm)	21
Solder Pin Length (mm)	3.4
PCB Hole Diameter (mm)	1.2
Comments	Pole sizes / no of ways not shown, please contact us for availability
Min Temperature Rating °C	16
Min Wire Size AWG	28
Pin Style	Solderable
Terminal Type	Wire protected
Tracking Resistance CTI (v)	600

INDUSTRY ACCREDITATIONS

