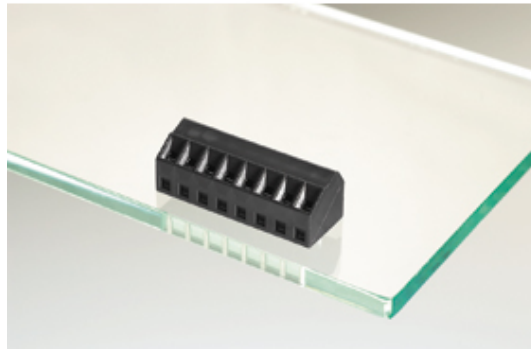




Standard PCB Terminal Blocks

Range: PCB Terminal Blocks, Connectors and Fuse Holders

Order Code: 31305111



DESCRIPTION

11 Pole 35 degree screw PCB terminal block 3.5mm pitch 10A 160V

Subject to technical modification without notice.

Typographical and other errors do not justify claim for damages.

SPECIFICATION

Type	Screw
Mounting Type	Wave - through hole
Orientation	35 Degree
Join	Solid body non stackable
Pitch (mm)	3.5
Number of Poles	11
Min Wire Size (Sq mm)	0.08
Max Wire Size (Sq mm)	1
Max Current (A)	10
Max Voltage (V)	160
Height (mm)	9.5
Standard Colour	Black
Length (mm)	38.5
Solder Pin Length (mm)	3.5
PCB Hole Diameter (mm)	1.1
Comments	Pole sizes / no of ways not shown, please contact us for availability
IP Rating	20
Min Temperature Rating °C	16
Min Wire Size AWG	28
Pin Style	Solderable
Terminal Type	Wire protected
Tracking Resistance CTI (v)	600

INDUSTRY ACCREDITATIONS

