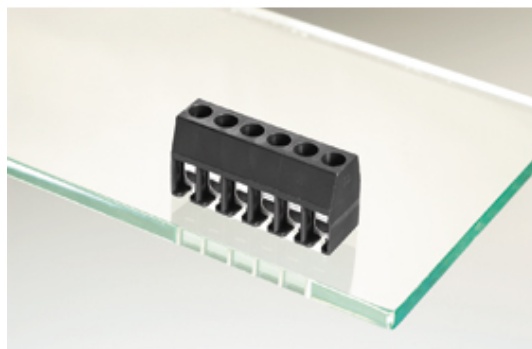




Standard PCB Terminal Blocks

Range: PCB Terminal Blocks, Connectors and Fuse Holders

Order Code: 31069111



DESCRIPTION

11 Pole horizontal screw PCB terminal block 5mm pitch 24A 250V

Subject to technical modification without notice.

Typographical and other errors do not justify claim for damages.

SPECIFICATION

| | |
|-----------------------------|---|
| Type | Screw |
| Mounting Type | Wave - through hole |
| Orientation | Horizontal |
| Join | Solid body non stackable |
| Pitch (mm) | 5 |
| Number of Poles | 11 |
| Min Wire Size (Sq mm) | 0.33 |
| Max Wire Size (Sq mm) | 1.5 |
| Max Current (A) | 24 |
| Max Voltage (V) | 250 |
| Height (mm) | 15 |
| Standard Colour | Black |
| Width (mm) | 9.8 |
| Length (mm) | 55 |
| Solder Pin Length (mm) | 3.5 |
| PCB Hole Diameter (mm) | 1.4 |
| Comments | Pole sizes / no of ways not shown, please contact us for availability |
| IP Rating | 20 |
| Min Temperature Rating °C | 12 |
| Min Wire Size AWG | 22 |
| Pin Style | Solderable |
| Terminal Type | Wire protected |
| Tracking Resistance CTI (v) | 600 |

INDUSTRY ACCREDITATIONS

