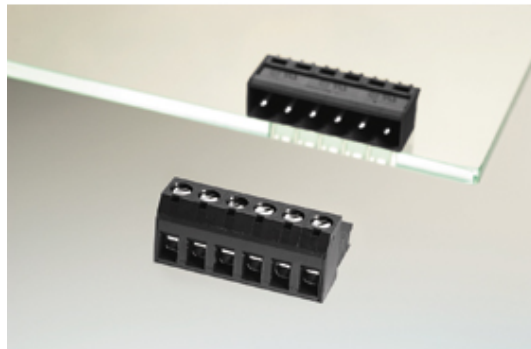




Plug and Socket PCB Terminal Blocks

Range: PCB Terminal Blocks, Connectors and Fuse Holders

Part Number: 31049105



DESCRIPTION

5 Pole vertical screw female plug terminal block 5mm pitch 13.5A 320V

Subject to technical modification without notice.

Typographical and other errors do not justify claim for damages.

SPECIFICATION

| | |
|------------------------------------|---|
| Type | Cable mount - Female plug |
| Connection Method | Screw |
| Mounting Type | Wire protector |
| Orientation | Vertical |
| Join | Solid body non stackable |
| Pitch (mm) | 5 |
| Number of Poles | 5 |
| Min Wire Size (Sq mm) | 0.08 |
| Max Wire Size (Sq mm) | 2.5 |
| Max Current (A) | 13.5 |
| Max Voltage (V) | 320 |
| Height (mm) | 12.7 |
| Standard Colour | Black |
| Width (mm) | 16.8 |
| Length (mm) | 25 |
| Comments | Pole sizes / no of ways not shown, please contact us for availability |
| IP Rating | 20 |
| Min Temperature Rating °C | 12 |
| Min Wire Size AWG | 22 |
| Pin Style | Pluggable |
| Terminal Type | Wire protected |
| Tracking Resistance CTI (v) | 600 |

INDUSTRY ACCREDITATIONS

