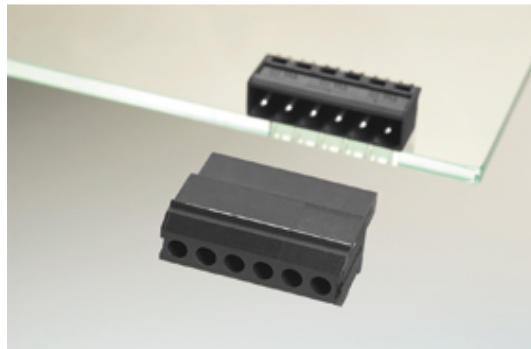




Plug and Socket PCB Terminal Blocks

Range: PCB Terminal Blocks, Connectors and Fuse Holders

Order Code: 31013106



DESCRIPTION

6 Pole horizontal screw female plug terminal block 5mm pitch 13.5A 320V

Subject to technical modification without notice.

Typographical and other errors do not justify claim for damages.

SPECIFICATION

Type	Cable mount - Female plug
Connection Method	Screw
Mounting Type	Wire protector
Orientation	Horizontal
Join	Interlocking
Pitch (mm)	5
Number of Poles	6
Min Wire Size (Sq mm)	0.08
Max Wire Size (Sq mm)	2.5
Max Current (A)	13.5
Max Voltage (V)	320
Height (mm)	24.1
Standard Colour	Black
Width (mm)	13.2
Length (mm)	31.5
Comments	Pole sizes / no of ways not shown, please contact us for availability
IP Rating	20
Min Temperature Rating °C	12
Min Wire Size AWG	22
Pin Style	Pluggable
Terminal Type	Wire protected
Tracking Resistance CTI (v)	600

INDUSTRY ACCREDITATIONS

