

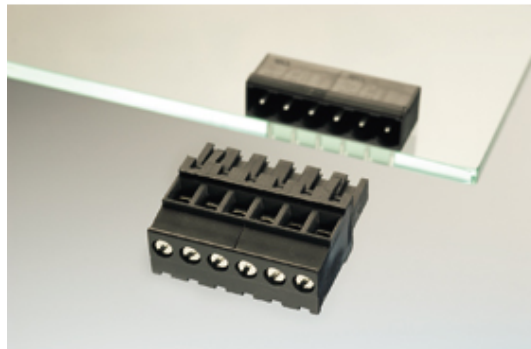


# Plug and Socket PCB Terminal Blocks

Range: PCB Terminal Blocks, Connectors and Fuse Holders

Part Number: 31214105

---



---

## DESCRIPTION

5 Pole horizontal screw female plug terminal block 5.08mm pitch 13.5A 320V

*Subject to technical modification without notice.*

*Typographical and other errors do not justify claim for damages.*

## SPECIFICATION

|                             |   |
|-----------------------------|---|
| Type                        | Cable mount - Female plug   |
| Connection Method           | Screw   |
| Mounting Type               | Rising clamp  |
| Orientation                 | Horizontal  |
| Join                        | Solid body non stackable  |
| Pitch (mm)                  | 5.08  |
| Number of Poles             | 5   |
| Min Wire Size (Sq mm)       | 0.08  |
| Max Wire Size (Sq mm)       | 2.5   |
| Max Current (A)             | 13.5  |
| Max Voltage (V)             | 320   |
| Height (mm)                 | 25.8  |
| Standard Colour             | Black   |
| Width (mm)                  | 12.5  |
| Length (mm)                 | 25.4  |
| Comments                    | Pole sizes / no of ways not shown, please contact us for availability |
| IP Rating                   | 20  |
| Min Temperature Rating °C   | 12  |
| Min Wire Size AWG           | 28  |
| Pin Style                   | Pluggable   |
| Tracking Resistance CTI (v) | 600   |

## INDUSTRY ACCREDITATIONS

