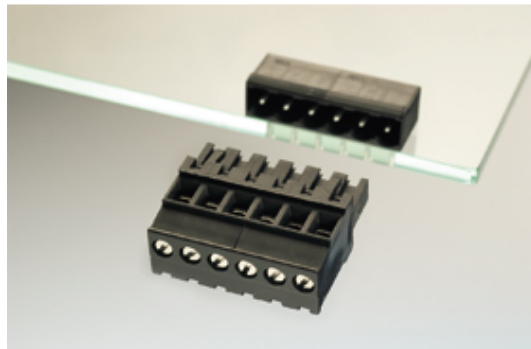




Plug and Socket PCB Terminal Blocks

Range: PCB Terminal Blocks, Connectors and Fuse Holders

Order Code: 31214109



DESCRIPTION

9 Pole horizontal screw female plug terminal block 5.08mm pitch 13.5A 320V

Subject to technical modification without notice.

Typographical and other errors do not justify claim for damages.

SPECIFICATION

| | |
|-----------------------------|---|
| Type | Cable mount - Female plug |
| Connection Method | Screw |
| Mounting Type | Rising clamp |
| Orientation | Horizontal |
| Join | Solid body non stackable |
| Pitch (mm) | 5.08 |
| Number of Poles | 9 |
| Min Wire Size (Sq mm) | 0.08 |
| Max Wire Size (Sq mm) | 2.5 |
| Max Current (A) | 13.5 |
| Max Voltage (V) | 320 |
| Height (mm) | 25.8 |
| Standard Colour | Black |
| Width (mm) | 12.5 |
| Length (mm) | 45.72 |
| Comments | Pole sizes / no of ways not shown, please contact us for availability |
| IP Rating | 20 |
| Min Temperature Rating °C | 12 |
| Min Wire Size AWG | 28 |
| Pin Style | Pluggable |
| Tracking Resistance CTI (v) | 600 |

INDUSTRY ACCREDITATIONS

