

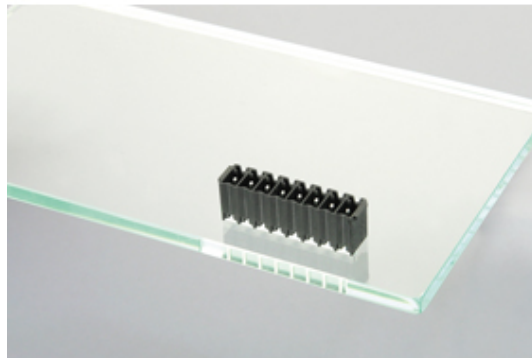


# Plug and Socket PCB Terminal Blocks

Range: PCB Terminal Blocks, Connectors and Fuse Holders

Part Number: 31189106

---



---

## DESCRIPTION

6 Pole vertical pin headers 3.5mm pitch 10A 130V

*Subject to technical modification without notice.*

*Typographical and other errors do not justify claim for damages.*

## SPECIFICATION

<b>Type</b>	PCB mount - Male header
<b>Mounting Type</b>	Wave / Through Hole Reflow compatible
<b>Orientation</b>	Vertical
<b>Pitch (mm)</b>	3.5
<b>Open/Closed/Screw/Flange</b>	Closed End
<b>Number of Poles</b>	6
<b>Max Current (A)</b>	10
<b>Max Voltage (V)</b>	130
<b>Height (mm)</b>	6.9
<b>Standard Colour</b>	Black
<b>Width (mm)</b>	9.2
<b>Length (mm)</b>	22.85
<b>Solder Pin Length (mm)</b>	3.2
<b>PCB Hole Diameter (mm)</b>	1.3
<b>Comments</b>	Pole sizes / no of ways not shown, please contact us for availability
<b>Pin Style</b>	Solderable
<b>Tracking Resistance CTI (v)</b>	600

## INDUSTRY ACCREDITATIONS

