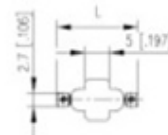
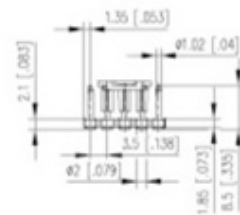




Plug and Socket PCB Terminal Blocks

Range: PCB Terminal Blocks, Connectors and Fuse Holders

Order Code: 31424106



DESCRIPTION

6 Pole vertical pin headers 3.5mm pitch

*Subject to technical modification without notice.
Typographical and other errors do not justify claim for damages.*

SPECIFICATION

Type	PCB mount - Male header
Mounting Type	SMT - Surface mount
Orientation	Vertical
Pitch (mm)	3.5
Number of Poles	6
Height (mm)	8.5
Standard Colour	Black
Length (mm)	20.2
Solder Pin Length (mm)	2
PCB Hole Diameter (mm)	1.5
Comments	Pole sizes / no of ways not shown, please contact us for availability
Pin Style	Solderable
Tracking Resistance CTI (v)	400

INDUSTRY ACCREDITATIONS

