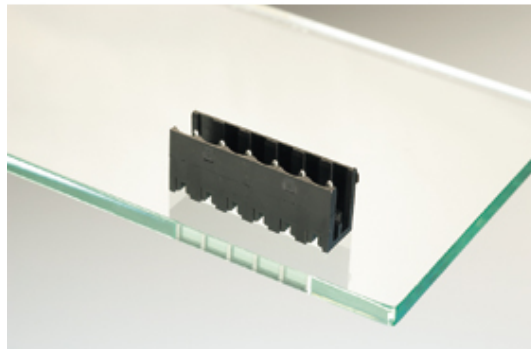




Plug and Socket PCB Terminal Blocks

Range: PCB Terminal Blocks, Connectors and Fuse Holders

Order Code: 31219106



DESCRIPTION

6 Pole vertical pin headers 5.08mm pitch 13.5A 320V

Subject to technical modification without notice.

Typographical and other errors do not justify claim for damages.

SPECIFICATION

| | |
|-----------------------------|---|
| Type | PCB mount - Male header |
| Mounting Type | Wave - through hole |
| Orientation | Vertical |
| Pitch (mm) | 5.08 |
| Open/Closed/Screw/Flange | Open End |
| Number of Poles | 6 |
| Max Current (A) | 13.5 |
| Max Voltage (V) | 320 |
| Height (mm) | 8.4 |
| Standard Colour | Black |
| Width (mm) | 12 |
| Length (mm) | 30.38 |
| Solder Pin Length (mm) | 3.25 |
| PCB Hole Diameter (mm) | 1.5 |
| Comments | Pole sizes / no of ways not shown, please contact us for availability |
| Pin Style | Solderable |
| Tracking Resistance CTI (v) | 600 |

INDUSTRY ACCREDITATIONS

