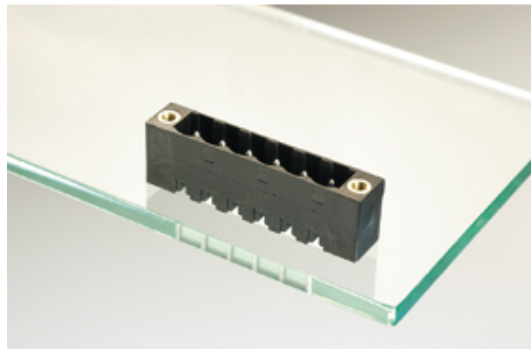




Plug and Socket PCB Terminal Blocks

Range: PCB Terminal Blocks, Connectors and Fuse Holders

Order Code: 31235111



DESCRIPTION

11 Pole vertical pin headers 5.08mm pitch 13.5A 320V

Subject to technical modification without notice.

Typographical and other errors do not justify claim for damages.

SPECIFICATION

Type	PCB mount - Male header
Mounting Type	Wave - through hole
Orientation	Vertical
Pitch (mm)	5.08
Open/Closed/Screw/Flange	Screw Flange
Number of Poles	11
Max Current (A)	13.5
Max Voltage (V)	320
Height (mm)	8.4
Standard Colour	Black
Width (mm)	12
Length (mm)	65.79
Solder Pin Length (mm)	3.25
PCB Hole Diameter (mm)	1.5
Comments	Pole sizes / no of ways not shown, please contact us for availability
Pin Style	Solderable
Tracking Resistance CTI (v)	600

INDUSTRY ACCREDITATIONS

