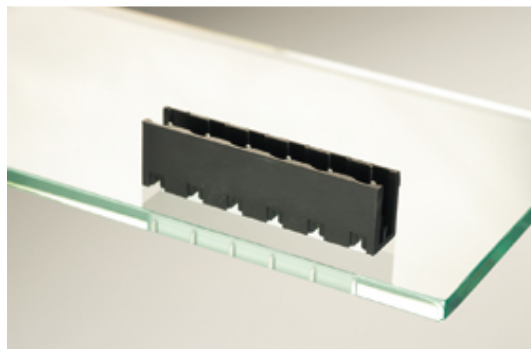




Plug and Socket PCB Terminal Blocks

Range: PCB Terminal Blocks, Connectors and Fuse Holders

Part Number: 31263102



DESCRIPTION

2 Pole vertical pin headers 7.62mm pitch 13.5A 500V

Subject to technical modification without notice.

Typographical and other errors do not justify claim for damages.

SPECIFICATION

Type	PCB mount - Male header
Mounting Type	Wave - through hole
Orientation	Vertical
Pitch (mm)	7.62
Open/Closed/Screw/Flange	Open End
Number of Poles	2
Max Current (A)	13.5
Max Voltage (V)	500
Height (mm)	8.4
Standard Colour	Black
Width (mm)	12
Length (mm)	13.44
Solder Pin Length (mm)	3.25
PCB Hole Diameter (mm)	1.5
Comments	Pole sizes / no of ways not shown, please contact us for availability
Min Temperature Rating °C	14
Min Wire Size AWG	28
Pin Style	Solderable
Tracking Resistance CTI (v)	600

INDUSTRY ACCREDITATIONS

