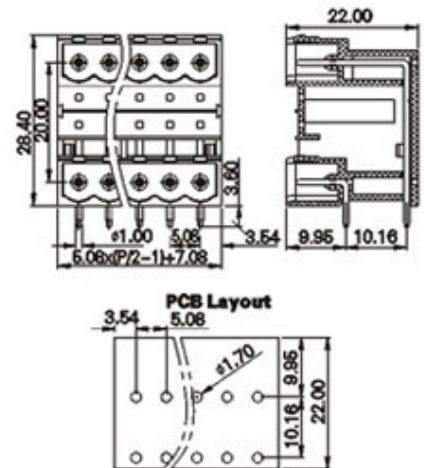
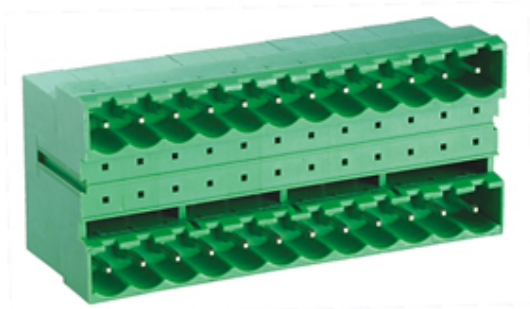




# Pluggable Pin Header (Male) - Single Row PCB Header

Range: PCB Terminal Blocks, Connectors and Fuse Holders

Part Number: TLPHDC-300R-06P



## DESCRIPTION

6 Pole PCB mount - Male header Wave - through hole Horizontal 5.08mm pitch 12A 300V

*Subject to technical modification without notice.*

*Typographical and other errors do not justify claim for damages.*

## SPECIFICATION

Type	PCB mount - Male header
Mounting Type	Wave - through hole
Orientation	Horizontal
Join	Solid body non stackable
Number of Levels	2
Pitch (mm)	5.08
Number of Poles	6
Max Current (A)	12
Max Voltage (V)	300
Height (mm)	28.4
Standard Colour	Green
Width (mm)	22
Length (mm)	17.96
Solder Pin Length (mm)	3.6
PCB Hole Diameter (mm)	1.6-1.7
Approvals Pending	UL Pending
Body Material	PA66 V0
Comments	Pole sizes / no of ways not shown, please contact us for availability
Min Temperature Rating °C	-40
Max Temperature Rating °C	105

## INDUSTRY ACCREDITATIONS

