



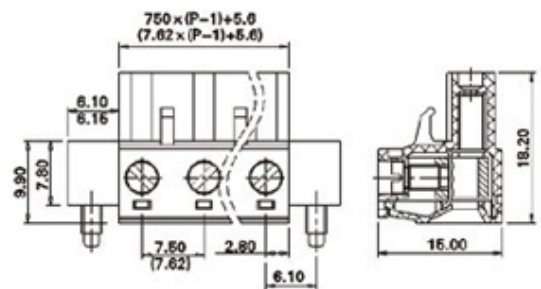
Pluggable Cable Mounting - Pluggable (Female)

Range: PCB Terminal Blocks, Connectors and Fuse Holders

Part Number: TLPSW-500V-02P



Product Image
Not Available



DESCRIPTION

2 Pole Vertical PCB terminal block 7.62mm pitch 12A 300V

*Subject to technical modification without notice.
Typographical and other errors do not justify claim for damages.*

SPECIFICATION

Type	Cable mount - Female plug
Connection Method	Screw
Mounting Type	Rising clamp
Orientation	Vertical
Join	Solid body non stackable
Pitch (mm)	7.62
Open/Closed/Screw/Flange	Screw Flange
Number of Poles	2
Min Wire Size (Sq mm)	0.08
Max Wire Size (Sq mm)	2.5
Max Current (A)	12
Max Voltage (V)	300
Height (mm)	15
Standard Colour	Green
Width (mm)	18.1
Length (mm)	25.42
Body Material	PA66 V0
Comments	Pole sizes / no of ways not shown, please contact us for availability
Min Temperature Rating °C	12
Max Temperature Rating °C	105
Min Wire Size AWG	28
Max Wire Size AWG	-40

INDUSTRY ACCREDITATIONS

