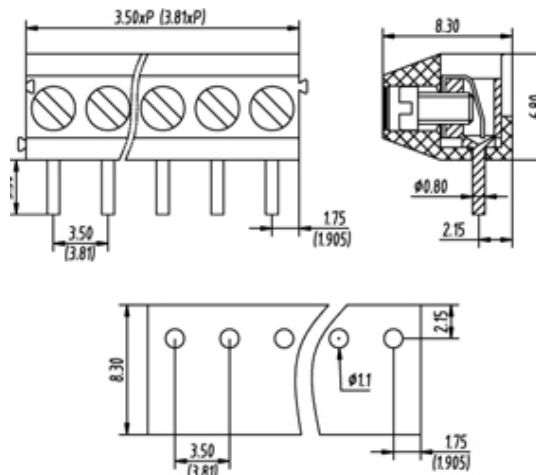


**TL001R-02PKC**

02 Pole Right angle PCB terminal block 3.5mm pitch 6A 300V


**SPECIFICATION**

|                        |   |
|------------------------|---|
| Type                   | Screw   |
| Connection Method      | Wire Protector  |
| Mounting Type          | Wave - through hole   |
| Orientation            | Horizontal  |
| Join                   | Interlocking  |
| Pitch (mm)             | 3.5   |
| Number of Poles        | 2   |
| Min Wire Size (Sq mm)  | 0.25  |
| Max Wire Size (Sq mm)  | 1.5   |
| Max Current (A)        | 6   |
| Max Voltage (V)        | 300   |
| Height (mm)            | 6.8   |
| Standard Colour        | Black   |
| Width (mm)             | 8.3   |
| Length (mm)            | 7   |
| Solder Pin Length (mm) | 3.5   |
| PCB Hole Diameter (mm) | 1.1   |
| Body Material          | PA66 V0   |
| Comments               | Pole sizes / no of ways not shown, please contact us for availability |
| Maximum Temp Rating °C | 105   |
| Max Wire Size AWG      | -40   |
| Minimum Temp Rating °C | 16  |
| Min Wire Size AWG      | 24  |
| Terminal Type          | Wire protected  |