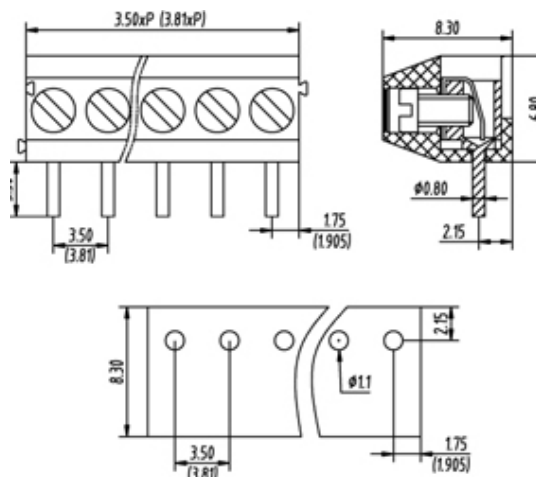


TL001R-03PKC

03 Pole Right angle PCB terminal block 3.5mm pitch 6A 300V


SPECIFICATION

Type	Screw
Connection Method	Wire Protector
Mounting Type	Wave - through hole
Orientation	Horizontal
Join	Interlocking
Pitch (mm)	3.5
Number of Poles	3
Min Wire Size (Sq mm)	0.25
Max Wire Size (Sq mm)	1.5
Max Current (A)	6
Max Voltage (V)	300
Height (mm)	6.8
Standard Colour	Black
Width (mm)	8.3
Length (mm)	10.5
Solder Pin Length (mm)	3.5
PCB Hole Diameter (mm)	1.1
Body Material	PA66 V0
Comments	Pole sizes / no of ways not shown, please contact us for availability
Maximum Temp Rating °C	105
Max Wire Size AWG	-40
Minimum Temp Rating °C	16
Min Wire Size AWG	24
Terminal Type	Wire protected