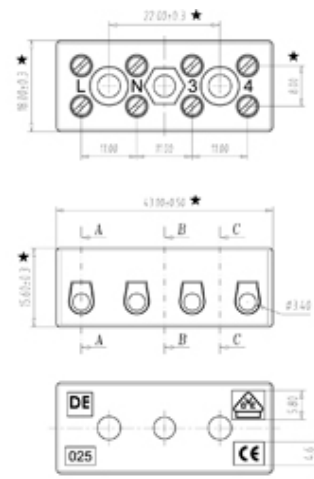
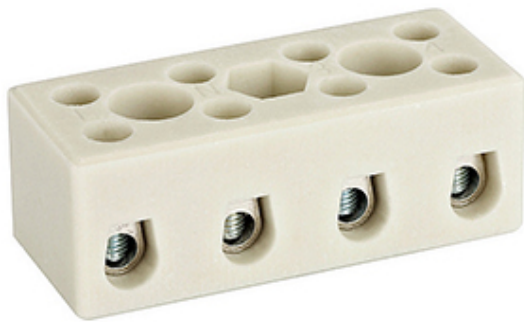


Steatite Ceramic High Temp. Blocks

Range: Emech Terminals/Accessories

Order Code: CTB-CMA-11.001-04WE (DESTB-0254)



DESCRIPTION

4 Pole steatite ceramic high temperature blocks terminal 32a 450v

EMECH TERMINALS/ACCESSORIES FEATURES

- Chemical Resistance
- Non-Flammability
- Heat resistance
- Dimensional stability up to 800°C
- Corrosion resistance
- Temp Rating of -40°C to +300-350°C
- Max Voltage 450V

Subject to technical modification without notice.

Typographical and other errors do not justify claim for damages.

SPECIFICATION

Number of Poles	4
Body Material	Steatite
Colour	White
Min Conductor Size (Sq mm)	1.5
Max Conductor Size (Sq mm)	6
Min Conductor Size AWG	22
Max Conductor Size AWG	12
Max Current (A)	32
Max Voltage (V)	450
Min Temperature Rating °C	-40
Max Temperature Rating °C	300-350
Pitch (mm)	11
Height (mm)	15.6
Width (mm)	18
Length (mm)	43
Comments	M3 conductor clamping screws, maximum torque=0.5Nm