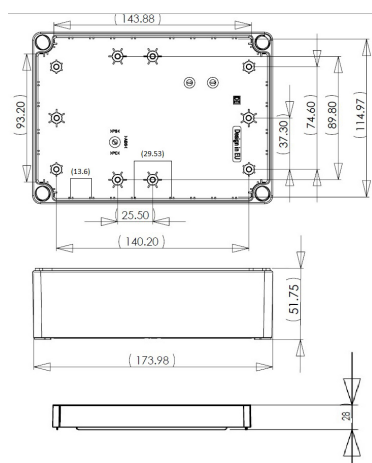
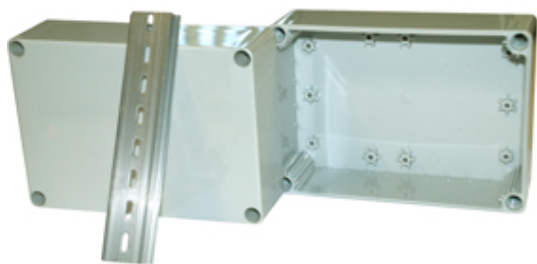


# General Purpose Enclosures/Junction Boxes

## Range: Enclosures

Order Code: ELE-ABS-13-08-18-GG (DN14E)



### DESCRIPTION

Grey RAL7035 IP66, IK08 general purpose ABS enclosure with internal mounting stand-offs. Supplied complete with 35mm DIN rail section for internal component mounting. The ABS lids are secured by captive plastic screws once inserted into the lid.

### ENCLOSURES FEATURES

- 6 sizes available
- Designed to meet protection and combustibility standards IP66 and IK08
- Captive plastic screws in lid
- 35mm DIN rail section supplied for internal mounting of components
- Can also be used for enclosing printed circuit boards
- Std products supplied in ABS for base and lid but clear polycarbonate lid options are available on DN12E, DN15E, DN16E and DN17E.

*Subject to technical modification without notice.*

*Typographical and other errors do not justify claim for damages.*

## SPECIFICATION

|                                  |  |
|----------------------------------|--|
| <b>Product Type</b>              | General Purpose Enclosure/Junction Box |
| <b>Base Style</b>                | General Purpose Enclosure/Junction Box |
| <b>Base Colour</b>               | Grey                                   |
| <b>Lid Colour</b>                | Grey                                   |
| <b>Enclosure Material</b>        | ABS                                    |
| <b>IP Rating</b>                 | 66                                     |
| <b>Colour</b>                    | Grey                                   |
| <b>Min Temperature Rating °C</b> | -10                                    |
| <b>Max Temperature Rating °C</b> | 80                                     |
| <b>Height (mm)</b>               | 125                                    |
| <b>Width (mm)</b>                | 175                                    |
| <b>Depth (mm)</b>                | 75                                     |