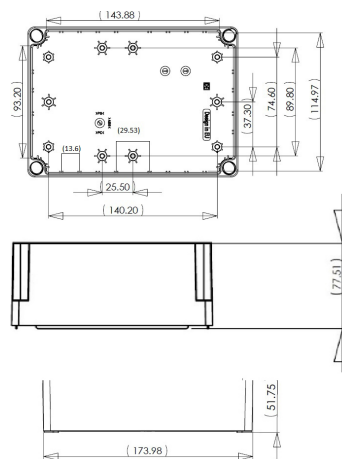
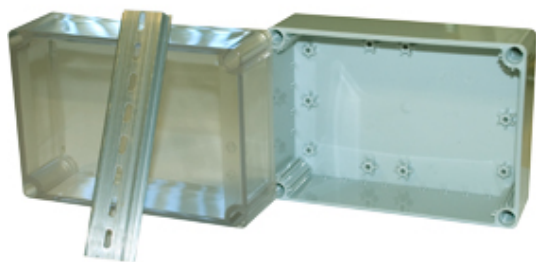


# General Purpose Enclosures/Junction Boxes

## Range: Enclosures

Order Code: ELE-ABS-13-13-18-GT (DN16T)



### DESCRIPTION

Grey RAL7035 IP66, IK08 general purpose ABS enclosure with internal mounting stand-offs. Supplied complete with 35mm DIN rail section for internal component mounting. The clear polycarbonate lids are secured by captive plastic screws once inserted into the lid.

### ENCLOSURES FEATURES

- 6 sizes available
- Designed to meet protection and combustibility standards IP66 and IK08
- Captive plastic screws in lid
- 35mm DIN rail section supplied for internal mounting of components
- Can also be used for enclosing printed circuit boards
- Std products supplied in ABS for base and lid but clear polycarbonate lid options are available on DN12E, DN15E, DN16E and DN17E.

*Subject to technical modification without notice.*

*Typographical and other errors do not justify claim for damages.*

## SPECIFICATION

<b>Product Type</b>	General Purpose Enclosure/Junction Box
<b>Base Style</b>	General Purpose Enclosure/Junction Box
<b>Base Colour</b>	Grey
<b>Lid Colour</b>	Transparent
<b>Enclosure Material</b>	ABS + Polycarbonate lid
<b>IP Rating</b>	66
<b>Colour</b>	Grey/Transparent
<b>Min Temperature Rating °C</b>	-10
<b>Max Temperature Rating °C</b>	80
<b>Height (mm)</b>	125
<b>Width (mm)</b>	175
<b>Depth (mm)</b>	125