



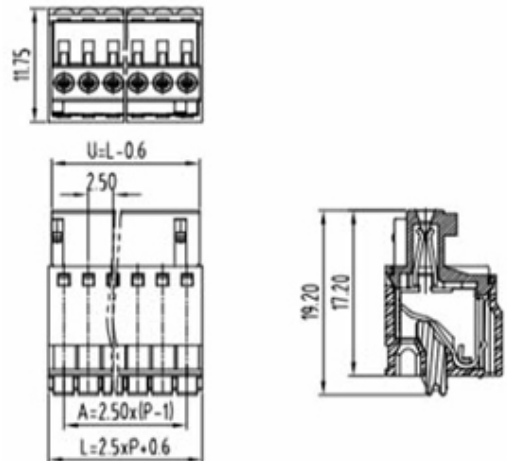
# Pluggable Cable Mounting - Pluggable (Female)

Range: PCB Terminal Blocks, Connectors and Fuse Holders

Order Code: TLPS-006V-20P



Product Image  
Not Available



## DESCRIPTION

20 Pole Pluggable type Horizontal 2.5mm pitch 4A 150V

*Subject to technical modification without notice.*

*Typographical and other errors do not justify claim for damages.*

## SPECIFICATION

<b>Connection Method</b>	Pluggable type
<b>Mounting Type</b>	Horizontal
<b>Orientation</b>	Horizontal
<b>Join</b>	Solid body non stackable
<b>Pitch (mm)</b>	2.5
<b>Number of Poles</b>	20
<b>Max Current (A)</b>	4
<b>Max Voltage (V)</b>	150
<b>Height (mm)</b>	19.2
<b>Length (mm)</b>	48.1
<b>Body Material</b>	PA66 V0