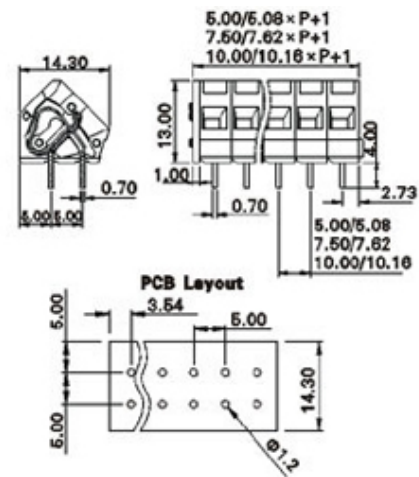
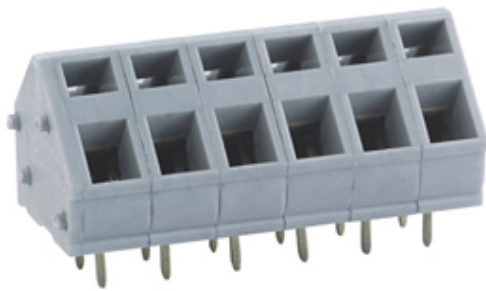


Screwless - Push Wire

Range: PCB Terminal Blocks, Connectors and Fuse Holders

Part Number: TLM203-0481-6P-M



DESCRIPTION

CLEARANCE - 6 Pole 45 degree PCB terminal block 5mm pitch 15A 300V

Subject to technical modification without notice.

Typographical and other errors do not justify claim for damages.

SPECIFICATION

| | |
|----------------------------------|---|
| Type | Spring - Screwless |
| Connection Method | Tool operated |
| Mounting Type | Wave - through hole |
| Orientation | 45 degree |
| Join | End stackable |
| Pitch (mm) | 5 |
| Number of Poles | 6 |
| Min Wire Size (Sq mm) | 0.08 |
| Max Wire Size (Sq mm) | 2.5 |
| Max Current (A) | 15 |
| Max Voltage (V) | 300 |
| Height (mm) | 13 |
| Standard Colour | Grey |
| Width (mm) | 14.3 |
| Length (mm) | 31 |
| Solder Pin Length (mm) | 4 |
| PCB Hole Diameter (mm) | 1.2 |
| Approvals Pending | UL Pending |
| Body Material | PA66 V0 |
| Comments | Pole sizes / no of ways not shown, please contact us for availability |
| Min Temperature Rating °C | 12 |
| Max Temperature Rating °C | 105 |
| Min Wire Size AWG | 28 |
| Max Wire Size AWG | -40 |

INDUSTRY ACCREDITATIONS

