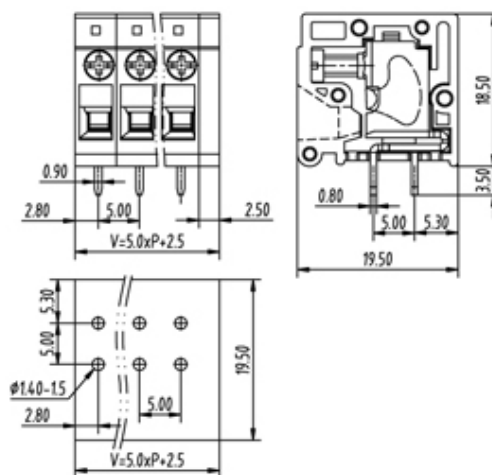


Rising Clamp - Single Row

Range: PCB Terminal Blocks, Connectors and Fuse Holders

Order Code: TL220VA-13PGS



DESCRIPTION

13 Pole Screw Rising Clamp Vertical 5mm pitch 20A(UL) 300V(UL)

Subject to technical modification without notice.

Typographical and other errors do not justify claim for damages.

SPECIFICATION

Type	Screw
Connection Method	Rising Clamp
Mounting Type	Vertical
Orientation	Vertical
Join	End Stackable
Pitch (mm)	5
Number of Poles	13
Max Current (A)	20A(UL)
Max Voltage (V)	300V(UL)
Height (mm)	18.5
Width (mm)	19.5
Length (mm)	67.5
Solder Pin Length (mm)	3.5
PCB Hole Diameter (mm)	1.4-1.5
Body Material	PA66 V0