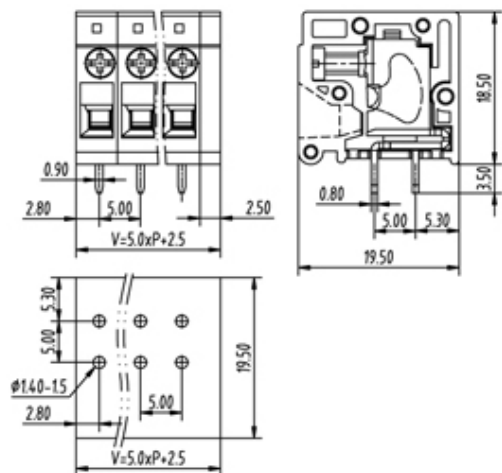


# Rising Clamp - Single Row

Range: PCB Terminal Blocks, Connectors and Fuse Holders

Order Code: TL220VA-17PGS



## DESCRIPTION

17 Pole Screw Rising Clamp Vertical 5mm pitch 20A(UL) 300V(UL)

*Subject to technical modification without notice.*

*Typographical and other errors do not justify claim for damages.*

## SPECIFICATION

<b>Type</b>	Screw
<b>Connection Method</b>	Rising Clamp
<b>Mounting Type</b>	Vertical
<b>Orientation</b>	Vertical
<b>Join</b>	End Stackable
<b>Pitch (mm)</b>	5
<b>Number of Poles</b>	17
<b>Max Current (A)</b>	20A(UL)
<b>Max Voltage (V)</b>	300V(UL)
<b>Height (mm)</b>	18.5
<b>Width (mm)</b>	19.5
<b>Length (mm)</b>	87.5
<b>Solder Pin Length (mm)</b>	3.5
<b>PCB Hole Diameter (mm)</b>	1.4-1.5
<b>Body Material</b>	PA66 V0