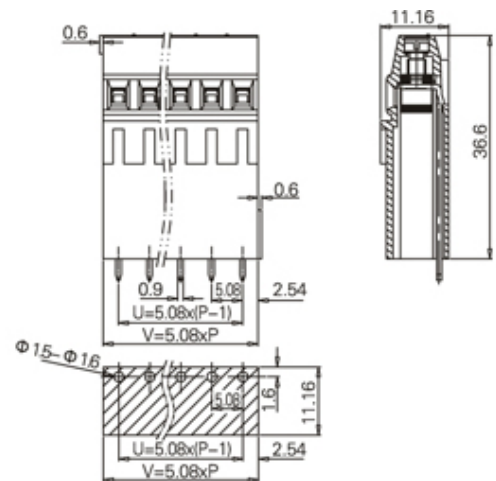




Rising Clamp - Single Row

Range: PCB Terminal Blocks, Connectors and Fuse Holders

Part Number: TL313V-06PGS



DESCRIPTION

6 Pole Screw Rising Clamp Vertical 5.08mm pitch 10A 300V

Subject to technical modification without notice.

Typographical and other errors do not justify claim for damages.

SPECIFICATION

Type	Screw
Connection Method	Rising Clamp
Mounting Type	Vertical
Orientation	Vertical
Join	Interlocking
Pitch (mm)	5.08
Number of Poles	6
Max Current (A)	10
Max Voltage (V)	300
Height (mm)	36.6
Standard Colour	Green
Width (mm)	11.16
Length (mm)	30.48
PCB Hole Diameter (mm)	1.5-1.6
Body Material	PA66 V0