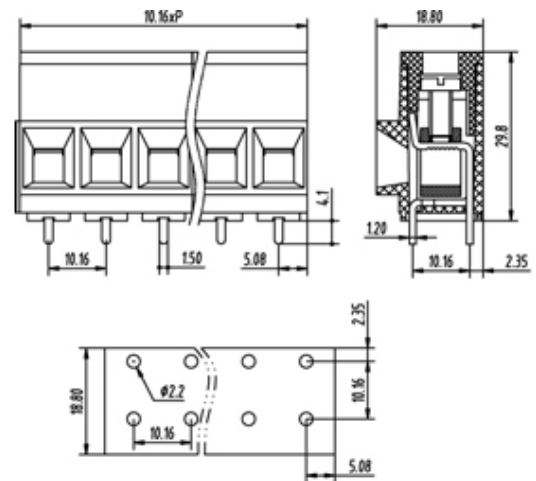
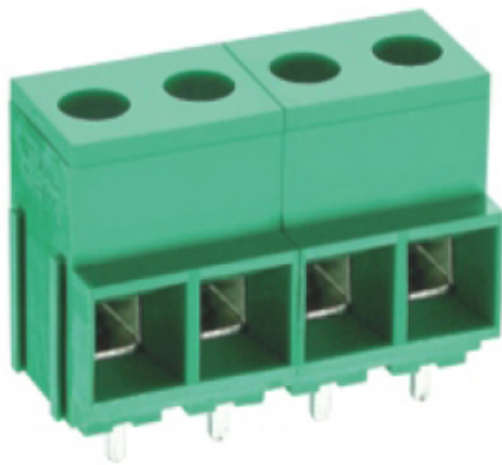




# Rising Clamp - Single Row

Range: PCB Terminal Blocks, Connectors and Fuse Holders

Part Number: TL800V-24PGS



## DESCRIPTION

24 Pole Screw Rising Clamp Wave - through hole Vertical 10.16mm pitch 50A(UL) 600V(UL)

*Subject to technical modification without notice.*

*Typographical and other errors do not justify claim for damages.*

## SPECIFICATION

<b>Type</b>	Screw
<b>Connection Method</b>	Rising Clamp
<b>Mounting Type</b>	Wave - through hole
<b>Orientation</b>	Vertical
<b>Join</b>	Interlocking
<b>Pitch (mm)</b>	10.16
<b>Number of Poles</b>	24
<b>Min Wire Size (Sq mm)</b>	6
<b>Max Wire Size (Sq mm)</b>	10
<b>Max Current (A)</b>	50A(UL)
<b>Max Voltage (V)</b>	600V(UL)
<b>Height (mm)</b>	29.8
<b>Standard Colour</b>	Green
<b>Width (mm)</b>	18.8
<b>Length (mm)</b>	243.84
<b>Solder Pin Length (mm)</b>	4.1
<b>PCB Hole Diameter (mm)</b>	2.2
<b>Body Material</b>	PA66 V0
<b>Comments</b>	Pole sizes / no of ways not shown, please contact us for availability
<b>Min Temperature Rating °C</b>	-40
<b>Max Temperature Rating °C</b>	105
<b>Min Wire Size AWG</b>	8
<b>Max Wire Size AWG</b>	6

## INDUSTRY ACCREDITATIONS

