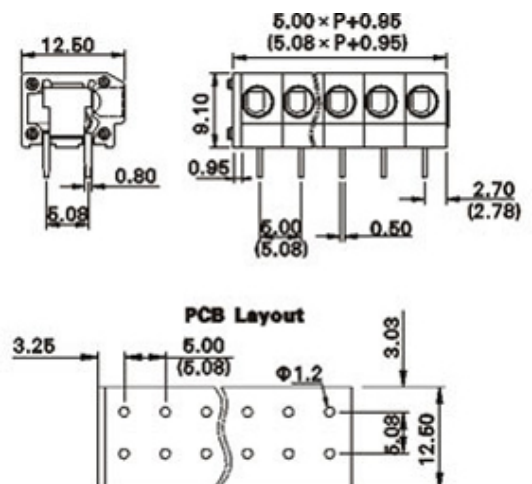
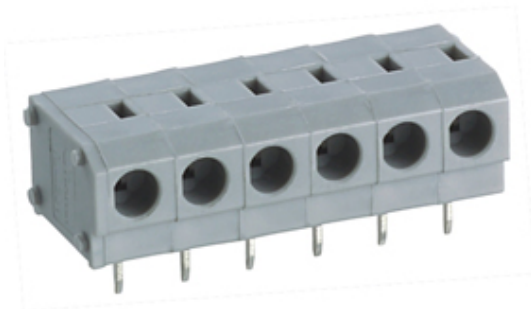


# Screwless - Push Wire

Range: PCB Terminal Blocks, Connectors and Fuse Holders

Order Code: TLM302R-21P



## DESCRIPTION

21 Pole Spring - Screwless Tool operated Wave - through hole Horizontal 5.08mm pitch 10A 300V

*Subject to technical modification without notice.*

*Typographical and other errors do not justify claim for damages.*

## SPECIFICATION

|                                  |   |
|----------------------------------|---|
| <b>Type</b>                      | Spring - Screwless  |
| <b>Connection Method</b>         | Tool operated   |
| <b>Mounting Type</b>             | Wave - through hole   |
| <b>Orientation</b>               | Horizontal  |
| <b>Join</b>                      | End stackable   |
| <b>Pitch (mm)</b>                | 5.08  |
| <b>Number of Poles</b>           | 21  |
| <b>Min Wire Size (Sq mm)</b>     | 0.5   |
| <b>Max Wire Size (Sq mm)</b>     | 1.5   |
| <b>Max Current (A)</b>           | 10  |
| <b>Max Voltage (V)</b>           | 300   |
| <b>Height (mm)</b>               | 13.1  |
| <b>Standard Colour</b>           | Grey  |
| <b>Width (mm)</b>                | 12.5  |
| <b>Length (mm)</b>               | 107.68  |
| <b>Solder Pin Length (mm)</b>    | 3.6   |
| <b>PCB Hole Diameter (mm)</b>    | 1.2   |
| <b>Approvals Pending</b>         | UL Pending  |
| <b>Body Material</b>             | PA66 V0   |
| <b>Comments</b>                  | Pole sizes / no of ways not shown, please contact us for availability |
| <b>Min Temperature Rating °C</b> | -40   |
| <b>Max Temperature Rating °C</b> | 105   |
| <b>Min Wire Size AWG</b>         | 20  |
| <b>Max Wire Size AWG</b>         | 14  |