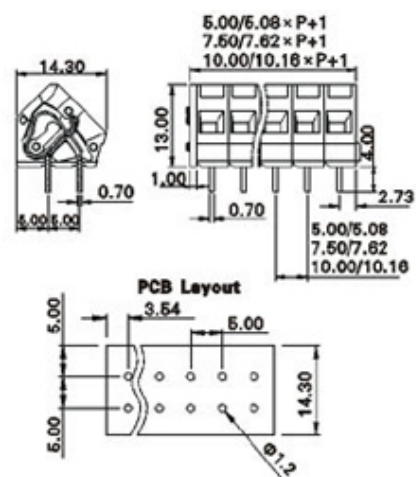
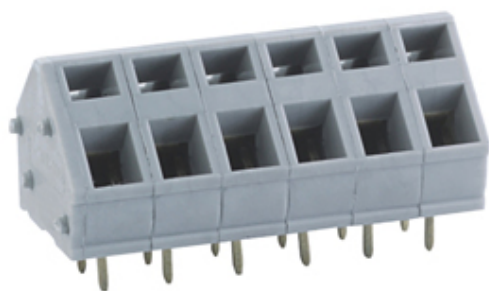




Screwless - Push Wire

Range: PCB Terminal Blocks, Connectors and Fuse Holders

Part Number: TLM503-20P



DESCRIPTION

20 Pole Spring - Screwless Tool operated Wave - through hole 45 degree 7.62mm pitch 15A 300V

Subject to technical modification without notice.

Typographical and other errors do not justify claim for damages.

SPECIFICATION

Type	Spring - Screwless
Connection Method	Tool operated
Mounting Type	Wave - through hole
Orientation	45 degree
Join	End stackable
Pitch (mm)	7.62
Number of Poles	20
Min Wire Size (Sq mm)	0.08
Max Wire Size (Sq mm)	2.5
Max Current (A)	15
Max Voltage (V)	300
Height (mm)	13
Standard Colour	Grey
Width (mm)	14.3
Length (mm)	153.4
Solder Pin Length (mm)	4
PCB Hole Diameter (mm)	1.2
Approvals Pending	UL Pending
Body Material	PA66 V0
Comments	Pole sizes / no of ways not shown, please contact us for availability
Min Temperature Rating °C	-40
Max Temperature Rating °C	105
Min Wire Size AWG	28
Max Wire Size AWG	12