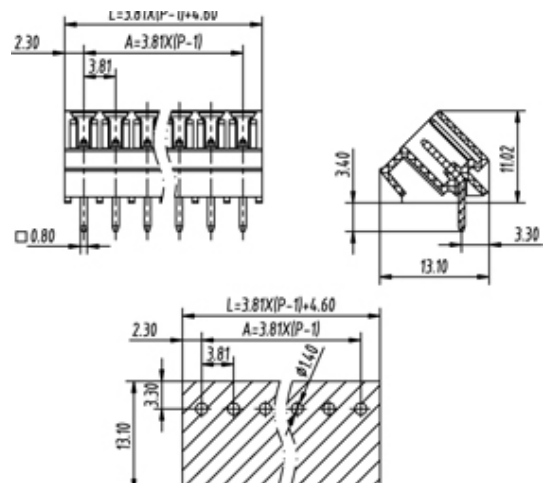
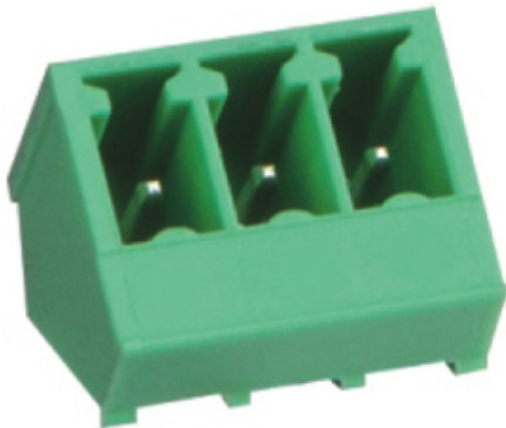




Pluggable Pin Header (Male) - Single Row PCB Header

Range: PCB Terminal Blocks, Connectors and Fuse Holders

Part Number: TLPHC-104-02P



DESCRIPTION

2 Pole Pluggable type 45 degree 45 degree 3.81mm pitch 10A 300V

Subject to technical modification without notice.

Typographical and other errors do not justify claim for damages.

SPECIFICATION

Connection Method	Pluggable type
Mounting Type	45 degree
Orientation	45 degree
Join	Solid body non stackable
Pitch (mm)	3.81
Open/Closed/Screw/Flange	Closed End
Number of Poles	2
Max Current (A)	10
Max Voltage (V)	300
Height (mm)	11.02
Standard Colour	Green
Width (mm)	13.1
Length (mm)	8.41
Solder Pin Length (mm)	3.4
PCB Hole Diameter (mm)	1.4
Body Material	PA66 V0