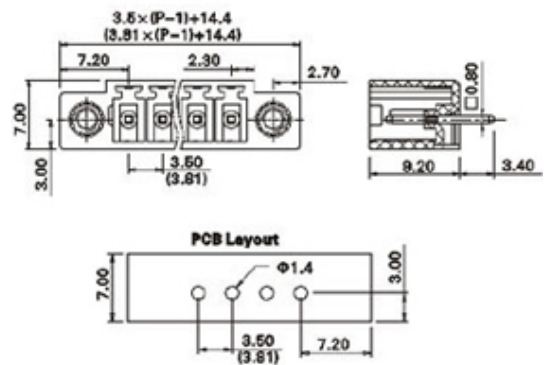
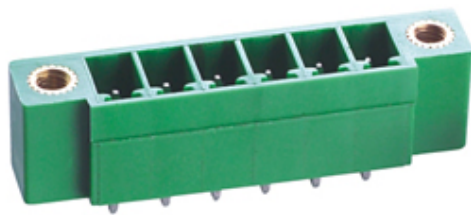




Pluggable Pin Header (Male) - Single Row PCB Header

Range: PCB Terminal Blocks, Connectors and Fuse Holders

Order Code: TLPHW-100V-16P



DESCRIPTION

16 Pole PCB mount - Male header Wave - through hole Vertical 3.81mm pitch 8A(UL) 10A(VDE) 300V(UL) 150V(VDE)

Subject to technical modification without notice.

Typographical and other errors do not justify claim for damages.

SPECIFICATION

| | |
|---------------------------|---|
| Type | PCB mount - Male header |
| Mounting Type | Wave - through hole |
| Orientation | Vertical |
| Join | Solid body non stackable |
| Pitch (mm) | 3.81 |
| Open/Closed/Screw/Flange | Screw Flange |
| Number of Poles | 16 |
| Max Current (A) | 8A(UL) 10A(VDE) |
| Max Voltage (V) | 300V(UL) 150V(VDE) |
| Height (mm) | 9.2 |
| Standard Colour | Green |
| Width (mm) | 7 |
| Length (mm) | 71.55 |
| Solder Pin Length (mm) | 3.5 |
| PCB Hole Diameter (mm) | 1.4 |
| Body Material | PA66 V0 |
| Comments | Pole sizes / no of ways not shown, please contact us for availability |
| Min Temperature Rating °C | -40 |
| Max Temperature Rating °C | 105 |

INDUSTRY ACCREDITATIONS

