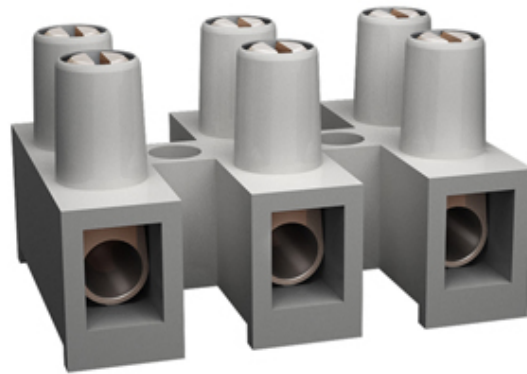




Pillar Terminal Blocks

Range: Emech Terminals/Accessories

Order Code: TLB-300W-12P-TS



DESCRIPTION

12 Pole pa66 pillar terminal block 41a 750v

*Subject to technical modification without notice.
Typographical and other errors do not justify claim for damages.*

SPECIFICATION

Number of Poles	12
Body Material	PA66
Colour	Natural
UL94 Rating	UL94V0
Base Type	Standard
Max Conductor Size (Sq mm)	6
Min Conductor Size AWG	22
Max Conductor Size AWG	10
Max Current (A)	41
Max Voltage (V)	750
Min Temperature Rating °C	-30
Max Temperature Rating °C	105
Pitch (mm)	12
Height (mm)	18.5
Width (mm)	23.5
Length (mm)	139.5

INDUSTRY ACCREDITATIONS

