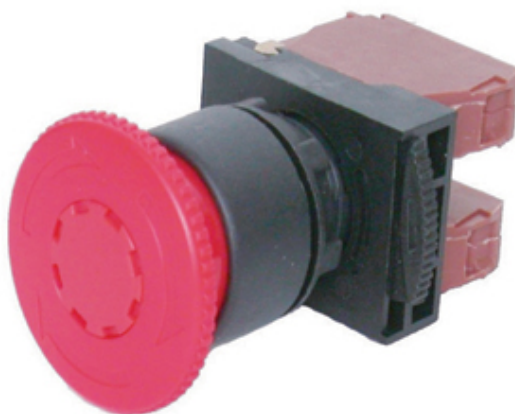


# Switches

## Range: Switches and Lamps

Part Number: DPB22-R01R



### DESCRIPTION

Reset mushroom head push button 1b red cap

### SWITCHES AND LAMPS FEATURES

- Non Illuminated push button switches available with 12 different heads
- All switches complete with 1 NO and 1 NC contact blocks
- Mechanical life - 1 million operations
- Contact material - Silver Bifurcated and serrated
- Contact rating - AC12 Resistive / AC15 Electromagnetic - 240V (3A) / 415V (1.5A)
- Choice Of Cap colours
- Insulation resistance - >100MOhm @ 500VDC
- Different voltage ratings are available
- Operating Temperature -10 to +65°C

*Features may vary by product throughout the range.*

*Subject to technical modification without notice.*

*Typographical and other errors do not justify claim for damages.*

## SPECIFICATION

Button Head Material	PA66 V2
Body Material	PA66 + 15% GF-VO
Locknut Material	PA66 V2 +15%GF
Button Head Lamp Colour	Red
Number of Contact Blocks	1
Switch Action	Latching
Shaft Style	Standard
Max Wire Size Single Strand (Sq mm)	2.5
Max Wire Size Multi Strand (Sq mm)	1.5
Min Temperature Rating °C	-10
Max Temperature Rating °C	65
Panel Hole Size	22.5mm
IP Rating	56
Product Sub Type	Twist to reset mushroom head
Product Type	Push button non-illuminated
Terminal Type	Screw clamp