

How JOW[®] Connector works

With JOW[®] CONNECTOR, you simply insert your cable into the opening of the insulation displacement connector cage, then snap it shut to secure the wiring in place. Precision-sharpened connector blades then cut through the insulating sheath, cold welding the wires to the JOW CONNECTOR's interior. This creates an IP33 rated dustproof, water-resistant and airtight connection between the wires.

The JOW[®] Connector product range

JOW CONNECTOR is available in two shapes and 11 unique models:

- **'I Type' for end to end connections** - five models with Conductor cross sectional areas from 0.1mm² – 5.0mm² and current ratings from 3Amp to 30Amp, depending on the conductor cross sectional area. Sizes range from 5.5mm (h) x 5.5mm (w) x 25mm (d) to 10.4mm (w) x 10.4mm (h) x 40mm (d)

'T Type' for spurred connections - The range is similar to the 'I type' but with 6 models covering conductor cross sectional areas of 0.1mm² – 5.0mm² and current ratings from 3Amp to 30Amp, depending on the conductor cross sectional area. The additional T model in this range caters for two different conductor sizes, the 'I end' is for conductors 0.1mm² – 0.5mm² whilst the 'T end' accommodates 0.6mm² – 1.0mm². As with all T end clamps, the 'T' end simply clamps onto the conductor, there's no need to cut and reconnect existing cables – thus saving valuable time. Sizes for the 'T Type' range from 5.5mm (h) x 14mm (w) x 25mm (d) to 10.4mm (h) x 20mm (w) x 42mm (d).

The maximum voltage for every JOW CONNECTOR product is 600V. The connectors are manufactured in RoHS compliant plastic and feature brass copper connector blades. Weight ranges from 0.5 to 5.7g each.

About IDT

IDT has been used extensively in the telecommunications, networking, electronics and computing sectors. However, thanks to recent developments enabling multiple stranded wire as well as solid (single stranded) conductors to be used, the benefits of IDT are now available across a growing range of electrical installations including domestic and low voltage industrial, marine and automotive applications.

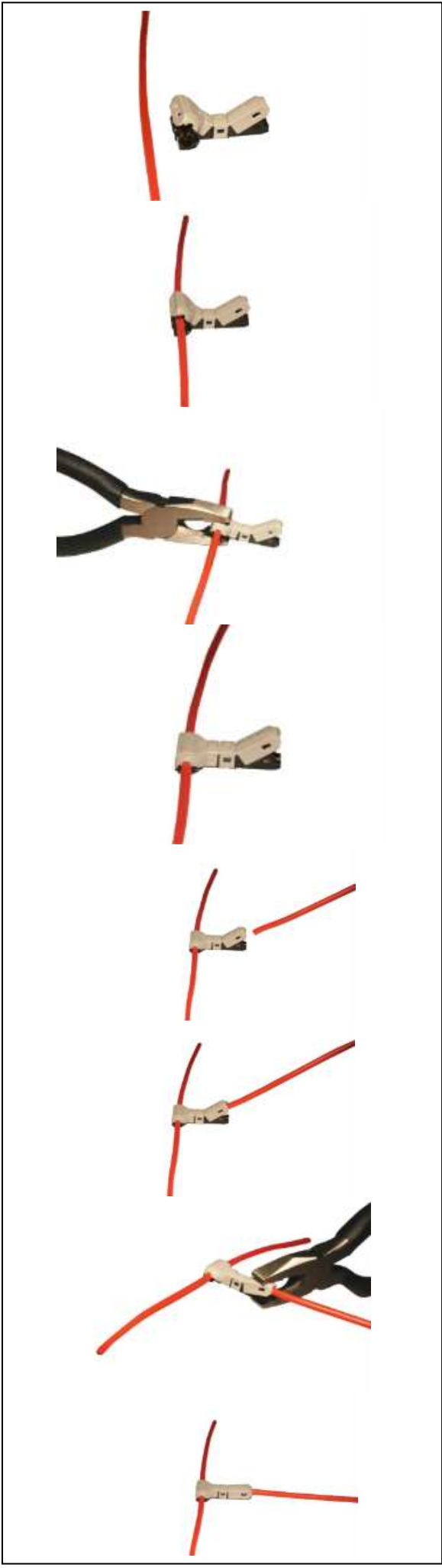
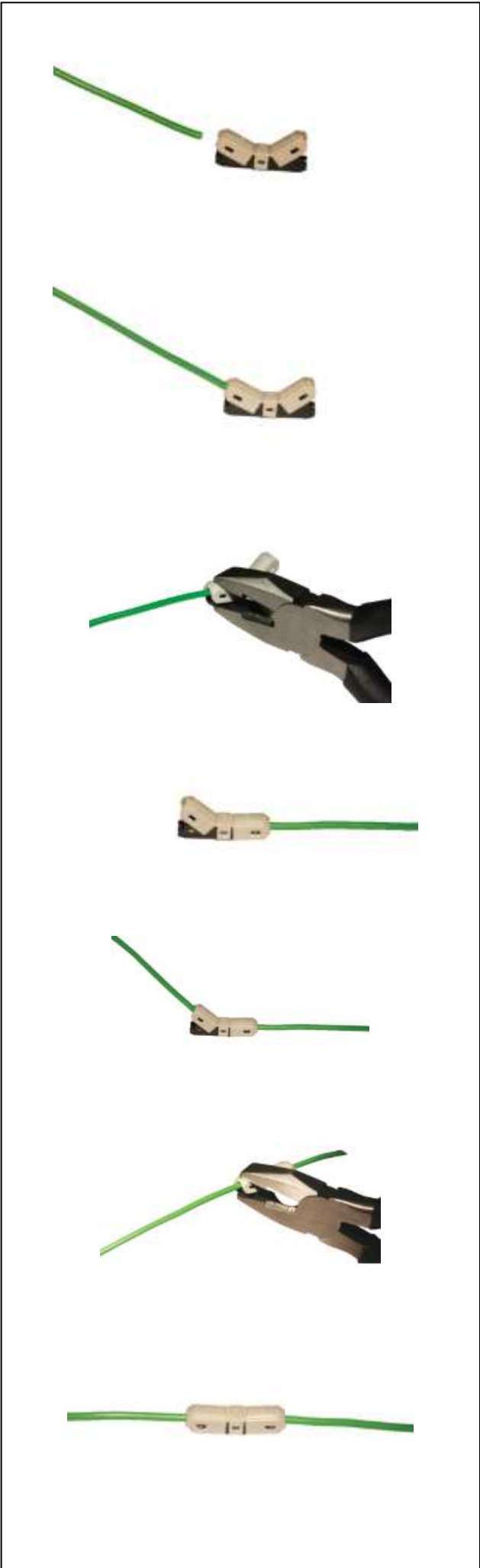
Benefits of JOW[®] CONNECTOR

- **Simple** – just insert the cables and snap the clamp shut. You don't even need to connect the wires and the only tool you may need is a pair of pliers to ensure a positive clamp on the larger JOW CONNECTOR products and hence a good electrical connection.
- **Safe** – once shut, JOW CONNECTOR is water-resistant and dustproof to IP33. And there's no risk of electric shock
- **Fast** – no stripping down cable sheath, no screwing down wires and no taping up afterwards – JOW CONNECTOR could reduce your installation times by up to 50%
- **Profitable** – turn saved time into more completed projects – and more satisfied customers
- **Suitable** – for solid or stranded conductors.

Connector Assembly Process

I style products

T style products



Technical Data and Product Specifications

The patented JOW® CONNECTOR model range comprises 11 models in two shapes, the 'I Type' for in-line connections and 'T Type' for spurred connections. Each type caters for cable diameters ranging from 0.1mm to 5.0mm and current ratings from 3A to 30A depending on the conductor cross sectional area.

The special DIDCT – 2 – I1 model is designed for two different conductor sizes. The 'I' end caters for conductors of 0.1 – 0.5mm², while the 'T' end accommodates conductors of 0.6 – 1.0mm².







Product Temperature range = -40 to +80C

Approval:- TUV No. N8 12 12 80351 011

Product Specifications

Products	I-1	I-2	I-3	I-4	I-5	T-1	T-2	T-3	T-4	T-5	Combined T2 I1	
											T	I
Cross section mm ² (AWG)	0.1-0.5 (27-20)	0.6-1.0 (19-17)	1.25-2.0 (16-14)	2.25-3.0 (13-12)	3.25-5.0 (11-10)	0.1-0.5 (27-20)	0.6-1.0 (19-17)	1.25-2.0 (16-14)	2.25-3.0 (13-12)	3.25-5.0 (11-10)	0.6-1.0 (19-17)	0.1-0.5 (27-20)
Connection method	cage clamp (insert and press)											
Number of strands	1 (stranded or solid)											
Connection	auto strip and connection in connector											
Wire type	solid or stranded											
Waterproof (IP)	IP33											
Measured voltage EN (V)	600											
Connector type	I	I	I	I	I	T	T	T	T	T	T2 I1	
Measured shock voltage kv)	1.8	6	9	12	18	1.8	6	9	12	18	1.8	
Connected Loss (Ohm)	0.0018	0.0010	0.0001	0.0001	0.0001	0.0018	0.0010	0.0005	0.0001	0.0001	0.0010	0.0018
Maximum Current EN (A)	3	10	15	20	30	3	10	15	20	30	10	3
Tensile strength (NT)	35	77	165	263	310	35	77	165	263	310	77	35
Weight (g)	0.8	1.0	2.1	2.5	4.4	1.0	1.6	2.9	3.3	5.7	1.6	
Colour (Upper/Bottom)	(grey/black)											
Height (a : mm)	5.5	6	7.2	7.7	10.4	5.5	6	7.2	7.7	10.4	6	
Width (b : mm)	5.5	6	7.2	7.7	10.4	5.5	6	7.2	7.7	10.4	16	
Width (T-type) (d : mm)						14	16	16	18	20	14	
Depth (c : mm)	25	30	30	36	40	25	30	31	37	42	30	
Connection points	4	4	6	6	6	4	4	6	6	6	4	
Brass (copper) thickness	0.3	0.4	0.5	0.5	0.5	0.3	0.4	0.5	0.5	0.5	0.3	0.4
Customs tariff no.	853590											
RoHs	compliant											

JOW® Connectors, I pack & T pack by size

Product Image	Part Number	Std Pack qty	Product Title	Conductor size (mm ²)	Max Voltage (V)	Max Current (A)
	DIDCI-1	10	JOW Connector IDCI size 1	0.1-0.5	600	3
	DIDCI-2	10	JOW Connector IDCI size 2	0.6-1.0	600	10
	DIDCI-3	10	JOW Connector IDCI size 3	1.25-2.0	600	15
	DIDCI-4	5	JOW Connector IDCI size 4	2.25-3.0	600	20
	DIDCI-5	5	JOW Connector IDCI size 5	3.25-5.0	600	30
	DIDCT-1	10	JOW Connector IDCT size 1	0.1-0.5	600	3
	DIDCT-2	10	JOW Connector IDCT size 2	0.6-1.0	600	10
	DIDCT-3	10	JOW Connector IDCT size 3	1.25-2.0	600	15
	DIDCT-4	5	JOW Connector IDCT size 4	2.25-3.0	600	20
	DIDCT-5	5	JOW Connector IDCT size 5	3.25-5.0	600	30
	DIDCT-2-11	10	JOW Connector combined I size 1 & T size 2	Combined:- I= 0.1-0.5, T= 0.6-1.0	600	I=3 T=10