

- IP65
- IP66
- IP67
- IP68

Housing, management and control of HVAC components



MAKING THE **RIGHT** CONNECTIONS



HVAC Protection and Management

Electrical Enclosures

- DN ABS Junction Box range
- DED ABS Door Enclosure Range
- DEDS Galvanised Steel Door Enclosure Range
- DEDSS Stainless Steel Range

Cable Management

- Cable Glands & Venting Elements
- Internal/External Connections - WEATHERPROOF connectors

HVAC Control

- Manual Controls – Rotary Isolators & Control Stations
- Automatic Controls – Heating, Cooling, Ventilation & Condensation management

Electrical Enclosures DN Range

MATERIAL	ABS
IP/IK RATING	IP66 / IK08
COLOUR	GREY (RAL7035)
TEMP. RATING	-10°C TO +80°C
LID	SOLID OR TRANSPARENT

The DN range Junction Boxes is made from high impact resistant ABS, flame retardant to UL94-HB, and with a solid wall thickness of between 3 & 4mm, making these enclosures incredibly tough and durable. Each one is moulded with internal mounting stand-offs and vertical PCB mounting slots. The DN Junction Box is ideal for use as a cable junction box or to enclose PCBs, control & emech components.



Electrical Enclosures DED Range

MATERIAL	ABS PLASTIC
IP/IK RATING	IP65 / IK08
COLOUR	GREY (RAL7035)
TEMP. RATING	-20°C TO +85°C
DOOR	SOLID OR TRANSPARENT

Manufactured from flame retardant ABS to UL94-HB, our DED range of Door Enclosures is manufactured to a very high quality which can endure high impact. Ideal for use in harsh locations such as salt air conditions and dry dust environments, DED enclosures come complete with everything you need in one kit. Available in 10 sizes.

KIT INCLUDES:

- Galvanised mounting plate plus fixing screws
- Locks and key included as standard



IP65

Electrical Enclosures DEDS Range

MATERIAL	GALVANISED STEEL
IP/IK RATING	IP66 / IK10
COLOUR	GREY (RAL7035)
TEMP. RATING	-20°C TO +55°C

Every Hylec DEDS Door Enclosure comes complete with everything you need in one kit. Manufactured from galvanised steel, each door enclosure & 2mm back plate comes with a 3 year guarantee against corrosion. Available in 21 sizes.

KIT INCLUDES:

- Galvanised Steel Wall Mounting Brackets
- Galvanised Mounting Plate
- Spacers for the Back Plate
- Pre-wired and Fitted Earthing Strap
- Stainless Steel Studs
- Metal Locks and Key supplied as Standard



IP66

Electrical Enclosures DEDSS Range

MATERIAL	STAINLESS STEEL
IP/IK RATING	IP66 / IK10
FINISH	POLISHED STEEL
TEMP. RATING	-20°C TO +55°C

Manufactured from grade 304 Stainless Steel, each enclosure comes complete with everything you need in one kit - so there is no need to purchase everything individually (saving you valuable time). Available in 6 sizes.

KIT INCLUDES:

- Galvanised Steel Wall Mounting Brackets
- Galvanised Mounting Plate
- Spacers for the Back Plate
- Pre-wired and Fitted Earthing Strap
- Stainless Steel Studs
- Metal Locks and Key supplied as Standard



IP66



Cable Management Internal/External

WEATHERPROOF CONNECTORS

A wide range of state-of-the-art connectors with built-in resistance to extreme conditions, such as rain, flood, tide, sand, snow, ice, industrial washes, chemicals, oil and grease.

PANEL MOUNTED CONNECTORS



MICRO CONNECTORS



WEATHERPROOF ELECTRICAL CONNECTORS



Cable Management

Cable Glands and Venting Elements

NYLON PERFECT METRIC CABLE GLANDS

Reliable cable glands that create an IP68 rated connection, ideal for use internally or externally and perfect for HVAC connections. Part of an extremely wide range in various materials with multiple uses.

VENTING ELEMENTS

Internal and external temperature fluctuations can create excessive pressure in electrical enclosures. Our venting elements are made from robust, flameproof materials and the watertight membrane allows a continuous pressure exchange with the outside.

NYLON, IP68 RATED CABLE GLANDS

Available in sizes M12 to M32. With a temperature rating of -20°C to +100°C and available in Grey and Black. The relevant sized, matching internal locknuts are also available for secure connections.



IP68

KWIK-FIX CABLE GLANDS

A unique design that requires no internal locknut. This enables rapid IP68 connections and simplifies the connection where cable management space is limited.

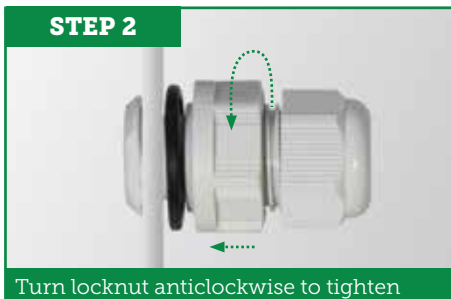


IP68

Product Code	Thread	H(mm)	ØC(mm)
K341-1016-00	M16	38.5	5-10
K341-1020-00	M20	42.5	8-13
K341-1025-00	M25	48	11-17



Insert cable gland into hole



Turn locknut anticlockwise to tighten



Rapid IP68 Connection

VENTING ELEMENTS

Quick and easy to install and avoid negative pressure, high humidity and condensation inside electrical enclosures. Rated to protection grade IP66/IP68 -0,6 bar (60 min.) / IP69K, the body is constructed in flameproof polyamide PA6 with a high-quality, breathable and watertight PES-membrane. Stainless steel versions are also available.



IP66

IP68

IP69K

CABLE ENTRY PLATES

Made from Polyamide PA66 GF25 V-0. With a temperature rating of -30°C to +100°C. Tool free connecting for the introduction of multiple cables in a small footprint area.

IP65



Manual Control Rotary Isolators and Control Stations

ROTARY ISOLATORS

Compact housing with ample cable management space, using quality flame retardant materials.



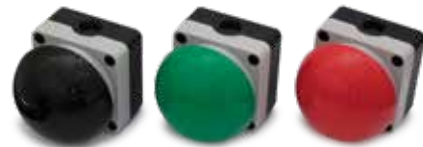
EMERGENCY STOP STATIONS

With bright yellow housing and including an impact stop button with twist/push/unlocking reset options.



CONTROL STATIONS

The Hylec Control Station range comes in a variety of colours and functions.



PALM/FOOT SWITCHES



PUSH BUTTON ON/OFF SWITCHES



DUAL PUSH BUTTONS



SELECTOR SWITCHES

CONTROL STATION COMPONENTS

Control station housings in high impact resistant, flame retardant ABS to UL94-HB.



SWITCH MECHANISMS

CONTROL STATION LAMPS AND ACCESSORIES

A range of lamp switches, signage and protective shrouds.



Automatic Control Control Equipment Ventilation, Heating & Accessories

THERMOSTATIC CONTROL

Normally closed (Blue), normally open (Red) and dual action thermostats to automatically monitor temperature, operating between 0 – 60°C and with clip-on mountings.



HUMIDITY CONTROL

Hygrostat control of humidity with clip-on mountings for DIN rails.



FILTER FANS AND ROOF FANS

Filter fans of varying sizes and strengths, designed to introduce cool, filtered air. Roof-mounted fans to remove hot/humid air.



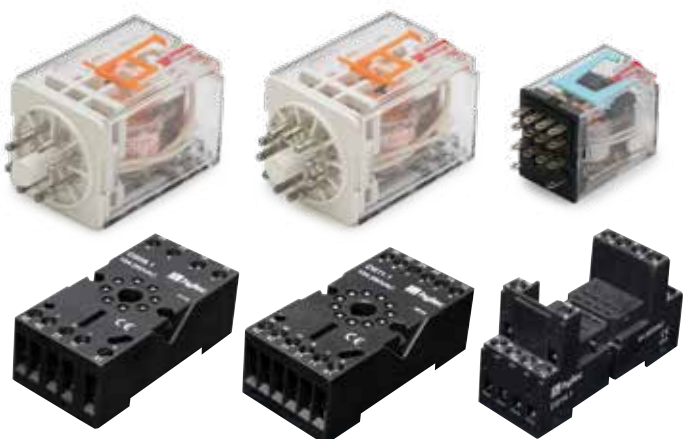
PTC HEATERS WITH INTEGRAL FANS

Self regulating PTC heaters, heaters with integral fans for quicker dispersal of heat and miniature heaters for tighter spaces.



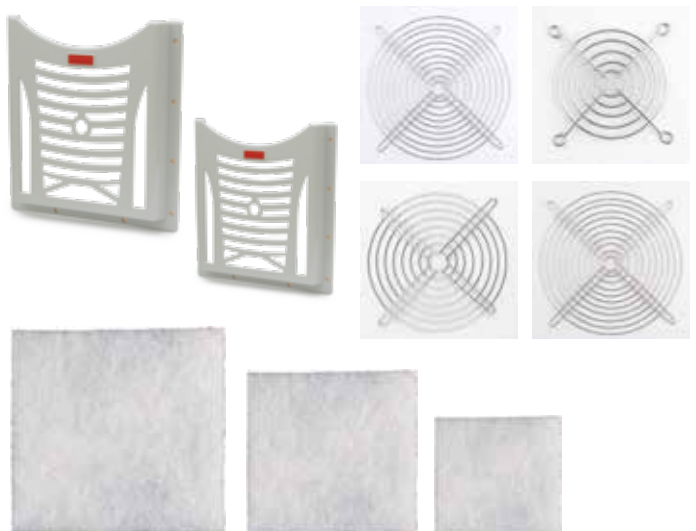
RELAY SWITCHES AND SOCKETS

Reliable electromagnetic relay switches for switching electrical equipment on and off. With 8, 11 and 14 pin connections, 24V, 110V & 240V AC and 24V DC voltage ratings.



ACCESSORIES

Document holders, filters and metal protective grills.



WEATHERPROOF CONNECTORS

TeeTubes	No. Poles	No. Cables	Max Current	Max Voltage	Min Cable ØC	Max Cable ØC
THB.390.A1A	3	2	32A	450V	7mm ²	13.5mm ²
THB.390.C1A	3	3	32A	450V	7mm ²	13.5mm ²
THB.391.A2A	2	2	32A	450V	7mm ²	12mm ²
THB.391.A3A	3	2	32A	450V	7mm ²	12mm ²
THB.391.A4A	4	2	32A	450V	7mm ²	12mm ²
THB.399.A3A	3	3	32A	450V	7mm ²	13.5mm ²
THB.399.A5A	5	3	32A	450V	7mm ²	13.5mm ²
THB.399.D6A	6	3	32A	450V	7mm ²	13.5mm ²
THB.399.D9B	3	3	32A	450V	8mm ²	17mm ²
THB.399.E3A	3	3	32A	450V	7mm ²	13.5mm ²
THB.402.C1A	3	3	32A	450V	7mm ²	13.5mm ²
THB.402.C2E	3	3	32A	450V	7mm ²	13.5mm ²
THB.402.D1F	5	3	32A	450V	8mm ²	13.5mm ²
THB.402.D1G	6	3	32A	450V	8mm ²	13.5mm ²
TTK20BK-SD	3	2	32A	450V	5mm ²	13mm ²
TTK25BK-SD	5	2	32A	450V	8mm ²	17mm ²

TeePlugs & Sockets	Description	No. Poles	Max Current	Max Voltage	Min Cable ØC	Max Cable ØC
THB.384.A1A	Plug	3	16A	400v	7mm	12mm
THB.384.B1A	Socket	3	16A	400v	7mm	12mm
THB.384.A2A	Plug	2	16A	400v	7mm	12mm
THB.384.B2A	Socket	2	16A	400v	7mm	12mm
THB.387.A4A	Plug	4	17.5A	500v	7mm	12mm
THB.387.B4A	Socket	4	17.5A	500v	7mm	12mm
THB.387.C4A	Chassis Plug	4	17.5A	500v	Panel Depth 1-7mm	
THB.387.D4A	Chassis Socket	4	17.5A	500v	Panel Depth 1-7mm	
THB.406.A1A	Chassis Plug	5	17.5A	400v	Max Panel Depth 12mm	
THB.405.A2A	Plug	5	17.5A	400v	7mm	13.5mm
THB.405.B2A	Socket	5	17.5A	400v	7mm	13.5mm
THB.406.A1B	Chassis Plug	3	25A	400v	Max Panel Depth 4mm	
THB.405.A2B	Plug	3	25A	400v	7mm	13.5mm
THB.405.B2B	Socket	3	25A	400v	7mm	13.5mm
THB.406.A1E	Chassis Plug	6	17.5A	400v	Max Panel Depth 4mm	
THB.405.A2E	Plug	6	17.5A	400v	7mm	13.5mm
THB.405.B2E	Socket	6	17.5A	400v	7mm	13.5mm
THB.381.A2A	Micro Plug	2	10A	400v	5.8mm	6.9mm
THB.381.B2A	Micro Socket	2	10A	400v	5.8mm	6.9mm
THB.381.L2A	Micro Chassis Plug	2	10A	400v	Max Panel Depth 4mm	
THB.381.M2A	Micro Chassis Socket	2	10A	400v	Max Panel Depth 4mm	
THB.381.A3A	Micro plug	3	10A	500v	7.0mm	8.0mm
THB.381.B3A	Micro Socket	3	10A	500v	7.0mm	8.0mm
THB.381.L3A	Micro Chassis Plug	3	10A	500v	Max Panel Depth 4mm	
THB.381.M3A	Micro Chassis Socket	3	10A	500v	Max Panel Depth 4mm	

Control Station Enclosures							
Yellow/Black Deep	W (mm)	W (mm)	W (mm)	Grey/Black Std.	W (mm)	W (mm)	W (mm)
DE01D-A-YB-1	73	78	80	DE01S-A-GB-1	73	53	80
DE02D-A-YB-2	106	78	80	DE02S-A-GB-2	106	53	80
DE03D-A-YB-3	139	78	80	DE03S-A-GB-3	139	53	80
DE04D-A-YB-4	172	78	80	DE04S-A-GB-4	172	53	80

Switches	Description
DPB22-F11R	Momentary Flush Head, Red Cap
DPB22-F11G	Momentary Flush Head, Green Cap
DPB22-F11Y	Momentary Flush Head, Yellow Cap
DPB22-F11B	Momentary Flush Head, Black Cap
DPB22-R11R	E-Stop, Push, Twist Release, Mushroom Head
DPB22-K11R	E-Stop, Key Release, Mushroom Head
DPB22-P11G	Latching Push Release, Elevated Head, Green Cap
DPB22-L11B	Latching Push Release, Flush Head, Black Cap
DPB22-M11R	Momentary 40mm Mushroom Head Red Button
DPB22-M11G	Momentary 40mm Mushroom Head Green Button
DPB22-M11Y	Momentary 40mm Mushroom Head Yellow Button
DSS22-S211B	Rotary Switch, Standard Shaft 2 Position, Black Lever
DSS22-S311B	Rotary Switch, Standard Shaft 3 Position, Black Lever
DPB22-S11R	E-Stop, Push Pull, Twist Release, 35mm Mushroom Head

ENCLOSURES

DN Range Enclosures				
Solid Doors	Transparent Doors	W (mm)	H (mm)	D (mm)
DN12E	DN12T	125	125	75
DN13E	DN13T	125	125	100
DN14E	DN14T	125	175	75
DN15E	DN15T	125	175	100
DN16E	DN16T	125	175	125
DN17E	DN17T	125	175	150
DN18E	DN18T	175	175	125

DED Range Enclosures				
Solid Doors	Transparent Doors	W (mm)	H (mm)	D (mm)
DED001	DED011	200	300	130
DED002	DED012	250	350	150
DED004	DED014	300	400	170
DED005	DED015	300	400	220
DED006	DED016	350	500	190
DED007	DED017	400	500	240
DED008	DED018	400	600	200
DED010	DED020	500	700	250
DED3003	DED3013	400	500	175
DED3021	DED3022	600	800	260

DEDS Range Enclosures				DEDSS Range Enclosures			
Product code	W (mm)	H (mm)	D (mm)	Product code	W (mm)	H (mm)	D (mm)
DEDS0099	200	250	130	DEDSS3101	200	300	150
DEDS0100	200	300	130	DEDSS3102	300	300	150
DEDS0102	300	300	150	DEDSS3402	300	400	200
DEDS0200	250	350	150	DEDSS3502	400	400	200
DEDS0300	400	500	175	DEDSS3601	400	500	200
DEDS0400	300	400	170	DEDSS3702	500	500	200
DEDS0500	300	400	220				
DEDS0502	400	400	200				
DEDS0600	350	500	190				
DEDS0601	400	500	200				
DEDS0611	400	500	175				
DEDS0700	400	500	240				
DEDS0702	500	500	200				
DEDS0800	400	600	200				
DEDS0802	400	600	250				
DEDS0803	600	600	200				
DEDS0900	400	800	200				
DEDS1000	500	700	250				
DEDS1001	600	800	260				
DEDS1012	600	1000	300				
DEDS1013	600	1250	300				

Cable Glands						
Grey RAL 7035	Black RAL 9005	Size	L (mm)	H (mm)	ØC (mm)	
50.612 PA7035	50.612 PA/SW	M12	31	8	3-6	
50.616 PA7035	50.616 PA/SW	M16	35.5	8	5-10	
50.620 PA7035	50.620 PA/SW	M20	36	8	8-13	
50.625 PA7035	50.625 PA/SW	M25	43	8	11-17	
50.632 PA7035	50.632 PA/SW	M32	50	10	15-21	

Venting Elements				
Grey RAL 7035	Size	Thread Length	O/A Length	AF/Dim
JDAE12PA7035	M12	10	17.8	10
JDAE20PA7035	M20	10	21.6	27
JDAE40PA7035	M40	18	35.6	50

Control Stations	Description
1DE.01.01AB	Emergency-stop twist to release, red mushroom head
1DE.01.03AB	Emergency-stop c/w key reset, red mushroom head
1DE.01.04AB	Single switch, red flush push button
1DE.01.06AB	Single switch, green flush push button
1DE.01.08AB	Standard lever 2 position selector,
1DE.01.09AB	Key 2 position selector
1DE.01.10AB	Double push button red/green
1DE.02.01AB	Emergency-stop, twist to release and green start
1DE.SP.21NB	Palm/Foot Stations 22mm Black Button
1DE.SP.21NG	Palm/Foot Stations 22mm Green Button
1DE.SP.21NR	Palm/Foot Stations 22mm Red Button